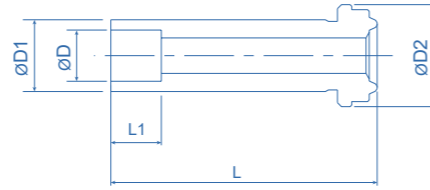
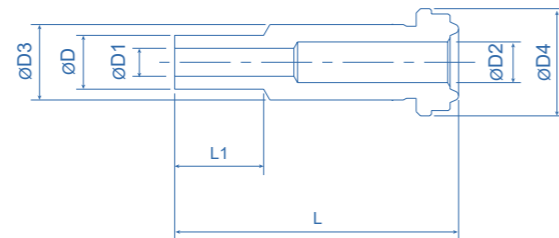


## Female Glands



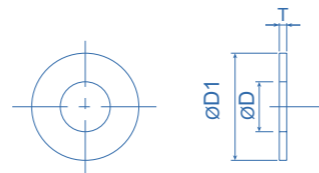
$\phi$ Nominal mm(inch)	$\phi D$ mm	$\phi D1$ mm	$\phi D2$ mm	L mm	L1 mm	Part No.
3.2 (1/8")	3.2	5.1	6.4	18	3	VVR-FG2
6.35 (1/4")	6.35	8.9	12.65	33.5	7.2	VVR-FG4
9.52 (3/8")	9.52	15.1	20.3	38	7.9	VVR-FG6
12.7 (1/2")	12.7	15.1	20.3	38	9.7	VVR-FG8
19.05 (3/4")	19.05	22.2	29.1	50.8	11.1	VVR-FG12

## Male Glands



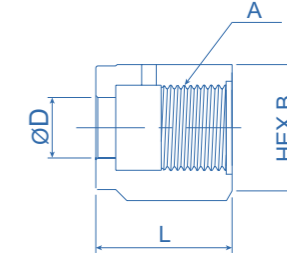
$\phi$ Nominal mm(inch)	$\phi D$ mm	$\phi D1$ mm	$\phi D2$ mm	$\phi D3$ mm	$\phi D4$ mm	L mm	L1 mm	Part No.
3.2 (1/8")	3.2	1.3	2.3	5	6.4	18	7.2	VVR-MG2
6.35 (1/4")	6.35	3.3	4.8	8.9	12.65	33.5	10.5	VVR-MG4
9.52 (3/8")	9.52	7.2	7.2	15.1	20.3	38	10.5	VVR-MG6
12.7 (1/2")	12.7	10.4	10.4	15.1	20.3	38	12.7	VVR-MG8

## Gaskets



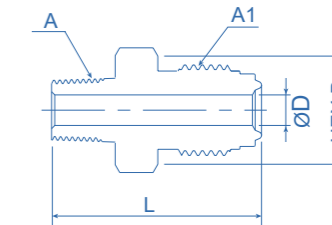
$\phi$ Nominal mm(inch)	$\phi D$ mm	$\phi D1$ mm	T mm	Material	Part No.
6.35 (1/4")	5.5	12.4	0.8	SUS316L (Double-Melt)	VVR-GK4-D
9.52 (3/8")	11	19.8	0.8	SUS316L (Double-Melt)	VVR-GK6-D
3.2 (1/8")	2.3	6.4	0.5	Nickel	VVR-GK2-C
6.35 (1/4")	5.5	12.4	0.8	Nickel	VVR-GK4-C
9.52 (1/4")	11	1.98	0.8	Nickel	VVR-GK4-C
19.05 (3/4")	17	28.5	0.8	Nickel	VVR-GK12-C

## Union Nut



$\phi$ Nominal mm(inch)	A	$\phi D$ mm	B mm	L mm	Part No.
3.2 (1/8")	5/16-24UNF	5.2	10	13.5	VVR-UN2
6.35 (1/4")	9/16-18UNF	9.1	19	20.5	VVR-UN4
9.52 (3/8")	7/8-14UNF	15.3	26	22.4	VVR-UN6
19.05 (3/4")	1 1/4-14UNF	22.3	38	29	VVR-UN12

## Male Connectors (NPT Thread)



$\phi$ Nominal mm(inch)	A	A1 mm	$\phi D$ mm	B mm	L mm	Part No.
3.2 (1/8")	1/8NPT	5/16-24UNF	2.3	1.2	26	VVR-MC2
6.35 (1/4")	1/8NPT	9/16-18UNF	4.8	17	33	VVR-MC4
6.35 (1/4")	1/4NPT	9/16-18UNF	4.8	17	36	VVR-MC4A
9.52 (3/8")	1/4NPT	7/8-14UNF	7.2	23	40	VVR-MC6
9.52 (3/8")	3/8NPT	7/8-14UNF	9.7	23	41	VVR-MC6B
9.52 (3/8")	1/2NPT	7/8-14UNF	10.4	23	45	VVR-MC6C

## Ordering Information

VVR - MG4 - S

### Part Type

- MG: male gland
- FG: female gland
- UN: union nut
- GK: gasket
- MC: male connector body

### Material (only for gasket)

- None: 316L single-melt
- D: 316L double-melt
- C: Nickel

### Norminal Diameter

- 2: 3.2mm (1/8")
- 4: 6.35mm (1/4")
- 6: 9.52mm (3/8")
- 8: 12.7mm (1/2")
- 12: 19.05mm (3/4")