

# Diaphragm Valve

## VDV31UA Series

### Product Features

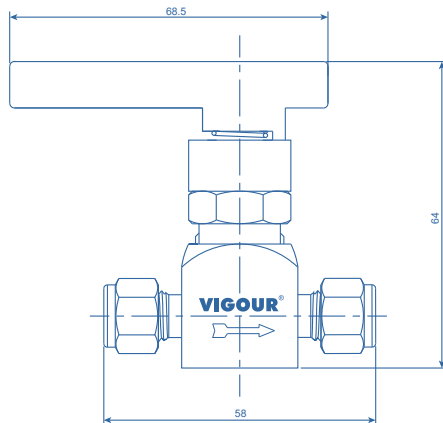
- Diaphragm valve
- Stainless steel 316L body for corrosive gases
- Inlet pressure max 300 bar
- Left or Right lever direction for Shutoff
- Wide range of inlets / outlets
- Metal-to-metal sealing to atmosphere

### Technical Data

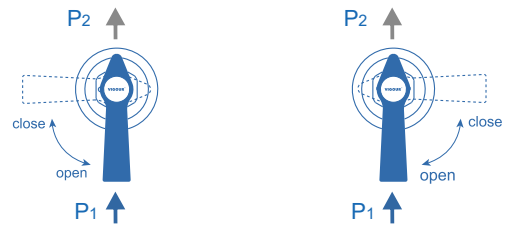
Type:	Diaphragm valve
Materials Body:	SS 316L
Seat:	PCTFE
Diaphragm:	Elgiloy®
Max. Working Temp.:	-10 ~ 150°F (-23 ~ 65°C)
Leak rate:	$\leq 1 \times 10^{-9}$ atm • cc/sec
Orifice:	Φ 2.7mm



### Dimensions (mm)

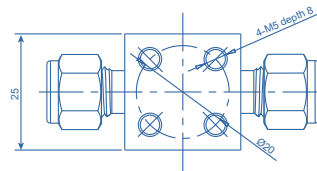


### Schematic Drawing



Right lever for Shutoff

Left lever for Shutoff



### Ordering Information

VDV31UA - S - 11 - 11 - L

#### Inlets / Outlets

- 01: 1/4" NPT(M)
- 10: 1/8" Tube Fitting
- 11: 1/4" Tube Fitting
- 15: 6mm Tube Fitting
- 16: 8mm Tube Fitting

#### Lever

- None: Right lever for Shutoff
- L : Left lever for Shutoff