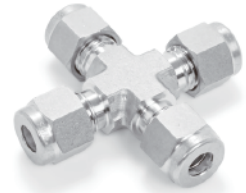
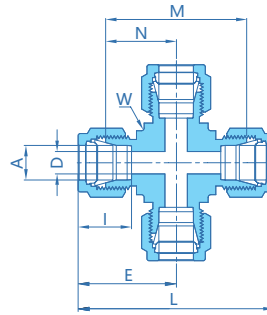


四通联合接头



公制卡套

订购参数	A 管外径		D		N		W 扳手平台		E		M		L		I	
	mm	inch	mm	inch	mm	inch	mm	inch	mm	inch	mm	inch	mm	inch	mm	inch
SS-VUC-3M	3		2.4		15.7		3/8	9.5	22.3		31.5		44.7		12.9	
SS-VUC-6M	6		4.8		19.6		1/2	12.7	27.0		39.1		53.9		15.3	
SS-VUC-8M	8		6.4		22.4		5/8	15.9	29.9		44.7		59.7		16.2	
SS-VUC-10M	10		7.9		25.9		13/16	20.6	33.5		51.8		67.0		17.2	
SS-VUC-12M	12		9.5		25.9		13/16	20.6	36.0		51.8		72.0		22.8	
SS-VUC-16M	16		12.7		26.9		15/16	23.8	37.0		53.8		74.0		24.4	
SS-VUC-18M	18		15.1		28.2		1-1/16	27.0	38.3		56.4		76.6		24.4	
SS-VUC-20M	20		15.9		34.5		1-3/8	34.9	44.6		69.0		89.3		26.0	
SS-VUC-22M	22		18.3		34.6		1-3/8	34.9	44.7		69.1		89.4		26.0	
SS-VUC-25M	25		21.8		36.8		1-3/8	34.9	49.1		73.7		98.3		31.3	

英制卡套

订购参数	A 管外径		D		N		W 扳手平台		E		M		L		I	
	inch	mm	inch	mm	inch	mm	inch	mm	inch	mm	inch	mm	inch	mm	inch	mm
SS-VUC-02	1/8	3.17	.09	2.28	.62	15.74	3/8	9.5	.88	22.35	1.24	31.48	1.76	44.70	.50	12.7
SS-VUC-04	1/4	6.35	.19	4.82	.77	19.56	1/2	12.7	1.06	26.92	1.54	39.12	2.12	53.84	.60	15.2
SS-VUC-05	5/16	7.93	.25	6.35	.88	22.35	5/8	15.9	1.17	29.71	1.76	44.70	2.34	59.42	.64	16.2
SS-VUC-06	3/8	9.52	.28	7.11	.91	23.11	5/8	15.9	1.20	30.48	1.82	46.22	2.40	60.96	.66	16.8
SS-VUC-08	1/2	12.70	.41	10.41	1.02	25.9	13/16	20.6	1.42	36.07	2.04	51.80	2.84	72.14	.90	22.9
SS-VUC-12	3/4	19.05	.62	15.74	1.17	29.72	1-1/16	27.0	1.57	39.88	2.34	59.44	3.14	79.76	.96	24.4
SS-VUC-16	1	25.40	.88	22.35	1.45	36.8	1-3/8	34.9	1.93	49.02	2.90	73.60	3.86	98.04	1.23	31.2



尺寸仅供参考，如有变更恕不另行通知。

