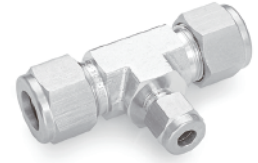
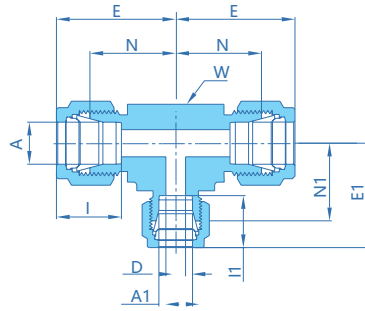


三通变径联合接头



公制卡套																					
订购参数	A 管外径		A1 管外径		E		E1		I		I1		D		W 扳手平台		N		N1		
	mm	mm	mm	mm	mm	mm	mm	mm	mm	mm	mm	mm	mm	mm	inch	mm	mm	mm	mm	mm	
SS-VRT-8M-T6M	8	6	29.5	29.0	16.2	15.3	4.8	5/8	15.9	22.4	22.4	22.4	22.4	4.8	11/16	17.5	23.9	23.9	23.9	23.9	23.9
SS-VRT-10M-T6M	10	6	31.5	29.7	17.2	15.3	4.8	13/16	20.6	25.9	24.4	24.4	4.8	13/16	20.6	25.9	25.9	25.9	25.9	25.9	25.9
SS-VRT-12M-T6M	12	6	36.0	31.8	22.8	15.3	7.9	15/16	23.8	28.7	28.7	28.7	7.9	15/16	23.8	28.7	28.7	28.7	28.7	28.7	28.7
SS-VRT-12M-T10M	12	10	36.0	33.5	22.8	17.2	9.5	1-1/16	27.0	29.7	29.7	29.7	9.5	1-1/16	27.0	29.7	29.7	29.7	29.7	29.7	29.7
SS-VRT-14M-T10M	14	10	38.8	36.3	24.4	17.2	9.5	2-3/4	69.9	68.9	68.6	68.6	9.5	2-3/4	69.9	68.9	68.9	68.9	68.9	68.9	68.6
SS-VRT-18M-T12M	18	12	39.8	39.8	24.4	22.8	33.7						33.7								
SS-VRT-50M-T38M	50	38	106.0	96.2	65.0	49.4															

英制卡套																					
订购参数	A 管外径		A1 管外径		E		E1		I		I1		D		W 扳手平台		N		N1		
	inch	mm	inch	mm	inch	mm	inch	mm	inch	mm	inch	mm	inch	mm	inch	mm	inch	mm	inch	mm	
SS-VRT-04-T02	1/4	6.35	1/8	3.17	1.06	26.9	1.03	26.2	.60	15.2	.50	12.7	.09	2.28	1/2	12.7	.77	19.6	.77	19.6	19.6
SS-VRT-06-T04	3/8	9.52	1/4	6.35	1.20	30.5	1.14	29.0	.66	16.8	.60	15.2	.19	4.82	5/8	15.9	.91	23.1	.85	21.6	21.6
SS-VRT-08-T04	1/2	12.70	1/4	6.35	1.42	36.1	1.25	31.8	.90	22.9	.60	15.2	.19	4.82	13/16	20.6	1.02	25.9	.96	24.4	24.4
SS-VRT-08-T06	1/2	12.70	3/8	9.52	1.42	36.1	1.31	33.3	.90	22.9	.66	16.8	.28	7.11	13/16	20.6	1.02	25.9	1.02	25.9	25.9
SS-VRT-10-T06	5/8	15.88	3/8	9.52	1.53	38.9	1.42	36.1	.96	24.4	.66	16.8	.28	7.11	15/16	23.8	1.13	28.7	1.13	28.7	28.7
SS-VRT-12-T04	3/4	19.05	1/4	6.35	1.57	39.9	1.46	37.1	.96	24.4	.60	15.2	.19	4.82	1-1/16	27.0	1.17	29.7	1.17	29.7	29.7
SS-VRT-12-T06	3/4	19.05	3/8	9.52	1.57	39.9	1.46	37.1	.96	24.4	.66	16.8	.28	7.11	1-1/16	27.0	1.17	29.7	1.17	29.7	29.7
SS-VRT-12-T08	3/4	19.05	1/2	12.70	1.57	39.9	1.57	39.9	.96	24.4	.90	22.9	.41	10.41	1-1/16	27.0	1.17	29.7	1.17	29.7	29.7
SS-VRT-16-T06	1	25.4	3/8	9.52	1.93	49.0	1.65	41.9	1.23	31.2	.66	16.8	.28	7.11	1-3/8	34.9	1.45	36.8	1.36	34.5	34.5
SS-VRT-16-T08	1	25.4	1/2	12.70	1.93	49.0	1.76	44.7	1.23	31.2	.90	22.9	.41	10.41	1-3/8	34.9	1.45	36.8	1.36	34.5	34.5
SS-VRT-16-T12	1	25.4	3/4	19.05	1.93	49.0	1.76	44.7	1.23	31.2	0.96	24.4	.62	15.75	1-3/8	34.9	1.45	36.8	1.36	34.5	34.5
SS-VRT-18-T16	1-1/4	31.75	1	25.40	2.67	67.8	2.17	55.1	1.62	41.2	1.23	31.2	.88	22.35	1-11/16	42.9	1.75	44.5	1.69	42.9	42.9
SS-VRT-24-T16	1-1/2	38.10	1	25.40	3.10	78.7	2.36	59.9	1.97	50.0	1.23	31.2	.88	22.35	2	50.8	2.00	50.8	1.88	47.8	47.8

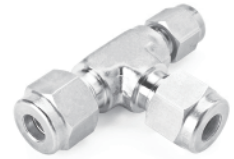
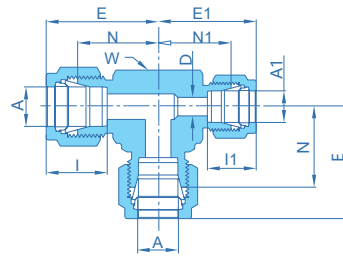


尺寸仅供参考，如有变更恕不另行通知。



超纯产品 高纯产品 医疗产品 监管产品 工业产品

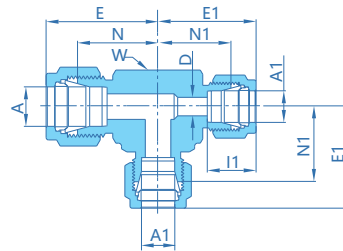
三通变径联合接头



英制卡套

订购参数	A 管外径		A1 管外径		E		E1		I		I1		D		W 扳手平台		N		N1	
	inch	mm	inch	mm	inch	mm	inch	mm	inch	mm	inch	mm	inch	mm	inch	mm	inch	mm	inch	mm
SS-VRT-04-02-T04	1/4	6.35	1/8	3.17	1.06	26.9	1.03	26.2	.60	15.2	.50	12.7	.09	2.28	1/2	12.7	.77	19.6	.77	19.6
SS-VRT-06-04-T06	3/8	9.52	1/4	6.35	1.20	30.5	1.14	29.0	.66	16.8	.60	15.2	.19	4.82	5/8	15.9	.91	23.1	.85	21.6
SS-VRT-08-04-T08	1/2	12.70	1/4	6.35	1.42	36.1	1.31	33.3	.90	22.9	.60	15.2	.19	4.82	13/16	20.6	1.02	25.9	1.02	25.9
SS-VRT-08-06-T08	1/2	12.70	3/8	9.52	1.42	36.1	1.31	33.3	.90	22.9	.66	16.8	.28	7.11	13/16	20.6	1.02	25.9	1.02	25.9
SS-VRT-12-06-T12	3/4	19.05	3/8	9.52	1.57	39.9	1.46	37.1	.96	24.4	.66	16.8	.28	7.11	1-1/16	27.0	1.17	29.7	1.17	29.7

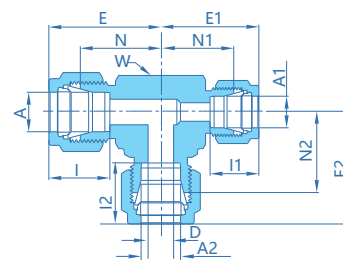
三通变径联合接头



英制卡套

订购参数	A 管外径		A1 管外径		E		E1		I		I1		D		W 扳手平台		N		N1	
	inch	mm	inch	mm	inch	mm	inch	mm	inch	mm	inch	mm	inch	mm	inch	mm	inch	mm	inch	mm
SS-VRT-08-T06	1/2	12.70	3/8	9.52	1.42	36.1	1.31	33.3	.90	22.9	.66	16.8	.28	7.1	13/16	20.6	1.02	25.9	1.02	25.9
SS-VRT-10-T06	5/8	15.87	3/8	9.52	1.53	38.9	1.42	36.1	.96	24.4	.66	16.8	.28	7.1	15/16	23.8	1.13	28.7	1.13	28.7
SS-VRT-12-T06	3/4	19.05	3/8	9.52	1.57	39.9	1.46	37.1	.96	24.4	.66	16.8	.28	7.1	1-1/16	27.0	1.17	29.7	1.17	29.7

三通变径联合接头



英制卡套

订购参数	A 管外径		A1 管外径		A2 管外径		E		E1		E2		I		I1		I2		D		W 扳手平台		N		N1&N2	
	inch	mm	inch	mm	inch	mm	inch	mm	inch	mm	inch	mm	inch	mm	inch	mm	inch	mm	inch	mm	inch	mm	inch	mm	inch	mm
SS-VRT-10-08-T06	5/8	15.87	1/2	12.70	3/8	9.52	1.53	38.9	1.53	38.9	1.42	36.1	.96	24.4	.90	22.9	.66	16.8	.28	7.11	15/16	23.8	1.13	28.7	1.13	28.7
SS-VRT-12-08-T06	3/4	19.05	1/2	12.70	3/8	9.52	1.57	39.9	1.57	39.9	1.46	37.1	.96	24.4	.90	22.9	.66	16.8	.28	7.11	1-1/16	27.0	1.17	29.7	1.17	29.7
SS-VRT-16-12-T06	1	25.40	3/4	19.05	3/8	9.52	1.93	49.0	1.76	44.7	1.65	41.9	1.23	31.2	.96	24.4	.66	16.8	.28	7.11	1-3/8	34.9	1.45	36.8	1.36	34.5

