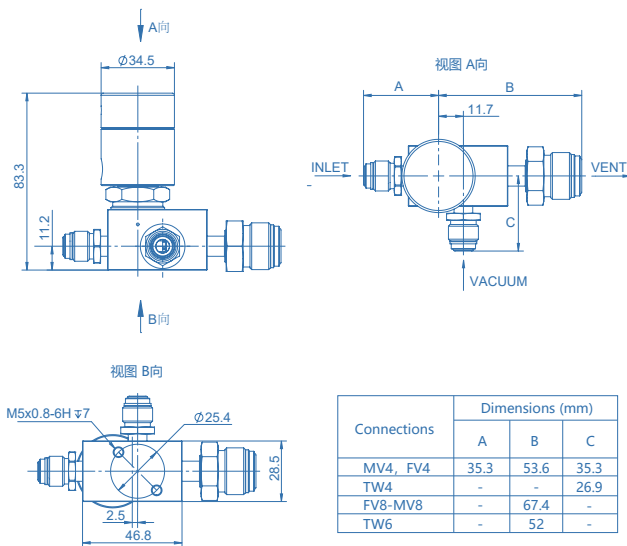


Product Feature

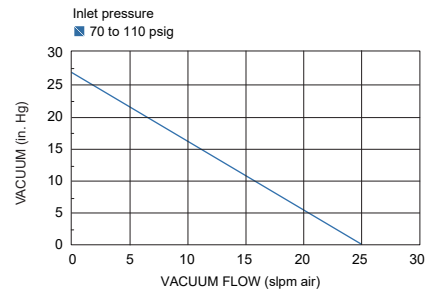
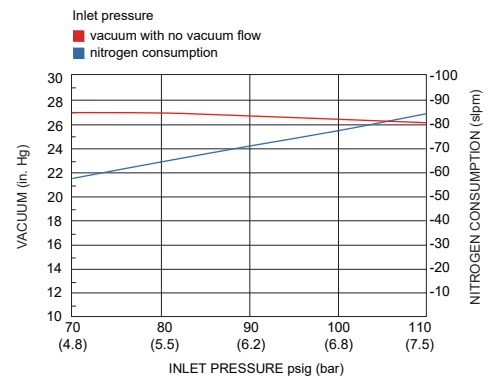
- pneumatic actuation
- Monoblock vacuum venturi, diaphragm valve and check valve
- Compact design
- Maximum vacuum: -88 KPa
- The product is fabricated in compliance with the VS001B process specification



Dimensions (mm)



Vacuum and Flow Specification

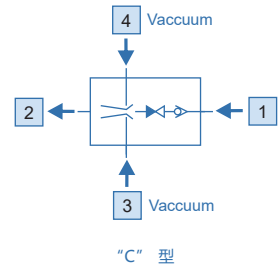
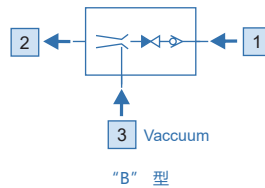
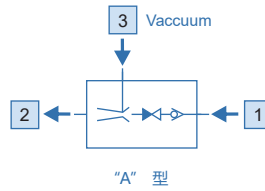
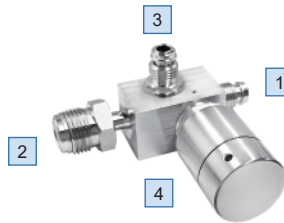


Technical Data

N2 Inlet pressure:	70 to 110 psig (4.8 to 7.6 bar)
N2 Flow:	60 slpm
Vacuum port maximum pressure:	3,000 psig (207 bar)
Check valve cracking pressure:	3 psid (0.2 bar) (differential)
Operating temperature:	-14~160°F (-10~71°C)
Inlet connection:	1/4" VFS fitting
Outlet connection:	1/4" 1/2" VFS fitting, 3/8" Tube weld
Vacuum port connection:	1/4" VFS fitting / Tube weld
Actuation connection:	M5
Actuation pressure:	70 to 110 psig (4.8 to 7.6 bar)
Leakage:	4x10 ⁻⁸ mbar l/s He (Inboard) 2x10 ⁻¹⁰ mbar l/s He (Outboard)
Materials	
Body:	316L
O-ring:	FKM / FFKM (option)



Ordering Information



Inlet/Outlet Connection

FV4: 1/4" VFS female
FV8: 1/2" VFS female

MV4: 1/4" VFS male
MV8: 1/2" VFS male

TW4: 1/4" Tube weld
TW6: 3/8" Tube weld

* Other connection standard, consult factory.

Port Selection

VVG2S - PC - C - 1 - 2 - 3 - 4 - 05 - K

Material
S: 316L

Type
PC: Pneumatic actuation
(normally closed)

Porting
A: 3P A type
B: 3P B type
C: 4P

Inlet Connection
MV4: 1/4" VFS male
FV4: 1/4" VFS female

Outlet Connection

MV4: 1/4" VFS male
FV4: 1/4" VFS female
MV8: 1/2" VFS male
FV8: 1/2" VFS female
TW6: 3/8" tube weld

O-ring
none: FKM
K: FFKM

Flow
05: 5 slpm constant bleed
08: 8 slpm constant bleed
15: 15 slpm constant bleed
*at 80 pisp N2

Vacuum Connection

MV4: 1/4" VFS male
FV4: 1/4" VFS female
TW4: 1/4" tube weld

Ordering Example

VVG2S - PC - A - MV4 - MV8 - MV4 - 05
1 - 2 - 3

