

Product Feature

- Ultrahigh cycle life with high-speed actuation
- Normally closed pneumatic actuation
- Switch position sensor optional
- The product is fabricated in compliance with the VS001A process specification
- Suitable for ultrahigh-purity applications
- Modular surface-mount, tube butt weld, and VFS end connections
- Opening and closing time of less than 5ms
- Fully swept flow path facilities
- Thermal isolation coupling optional

Technical Data

Max. Working Pressure:	145 psig (10bar)
Actuation Pressure:	50~90 psig (3.5~6.2 bar)
Working Temp.:	-9°F ~ 399°F (-23°C ~ 200°C) Body Max. Temp 200°C
Materials	
Body:	see ordering info
Diaphragm:	Elgiloy®
Seat:	High purity PFA
Flow capacity:	VALD3 Cv=0.27, VALD6 Cv=0.62
Weight:	approx. 1.54kg



VALD3

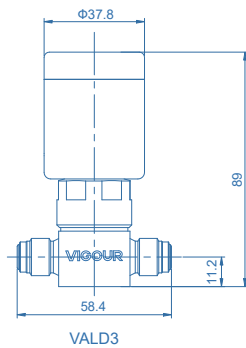


VALD3T

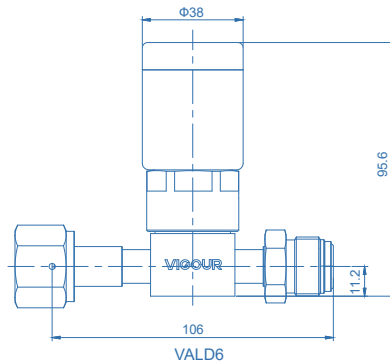


VALD6

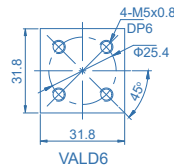
Dimensions (mm)



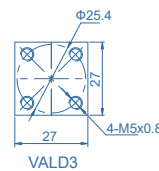
VALD3



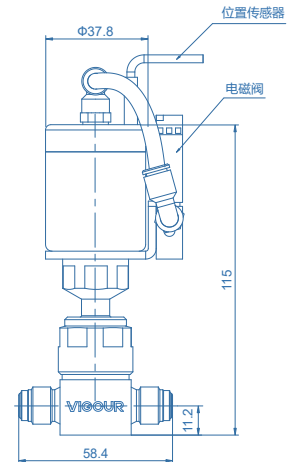
VALD6



VALD6



VALD3



Ordering Information

VALD3 S - PC - MV4 - MV4 - S - V

Type	3: Max. Working Temp. 120°C 1/4"	3T: Max. Working Temp. 200°C 1/4"	6: Max. Working Temp. 120°C 1/2"	6T: Max. Working Temp. 200°C 1/2"	Optional						
Materials	S: 316L	SLV: 316L secondary remelt	End Connection	TW4: 1/4" tube weld	FV4: 1/4" VFS (F)	MV4: 1/4" VFS (M)	TW8: 1/2" tube weld	FV8: 1/2" VFS (F)	MV8: 1/2" VFS (M)	Optional	
Actuator	PC: pneumatic actuator, normally closed				None: Without solenoid pilot valve	V: Solenoid pilot valve				None: Without electronic actuator-position sensor	S: Electronic actuator-position sensor

* Other connection standard, consult factory

