

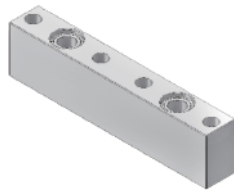
Substrates VIB Series (W-seal)

Product Features

- W-seal
- Non-fixed installation to ensure the sealing effect
- The wet part is treated with EP
- The surface finish: Max. 5μin. Ra
- Material: 316L VIM-VAR



Standard Substrates



1-Path Bypass Substrates



Plugs



Transition Substrates



2-Path Bypass Substrates



End Substrates

订购参数

VIB11 - W - 02001

Port Size

11: 1.125"
15: 1.5"

Port Type

W: W-seal

Part Number

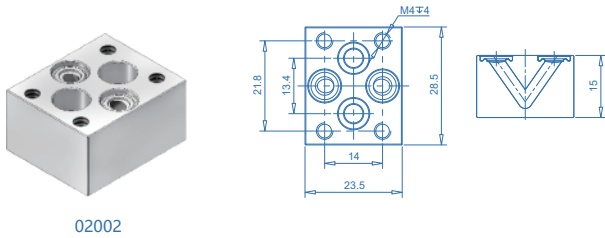
02001
02002
02003
01001
04001
.....

*Other type, Please consult the factory
*Please refer to the detailed size diagram

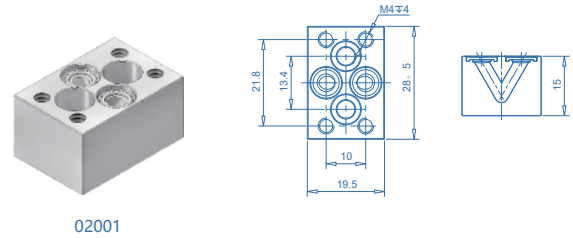


Substrates
VIB Series (W-seal)

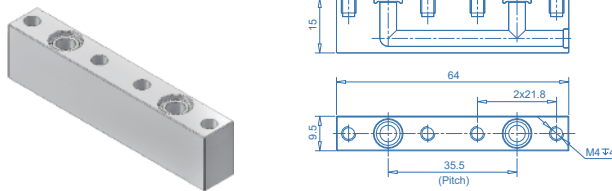
Dimensions (mm)



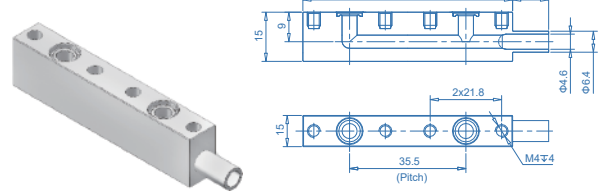
02002



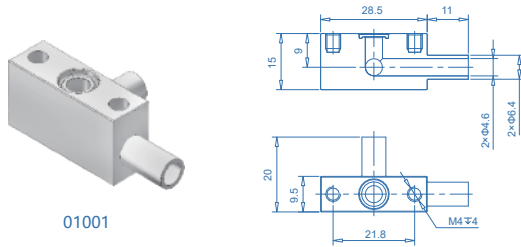
02001



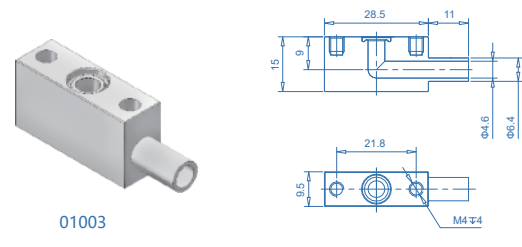
Pitch 35.5mm: 02003
Pitch 30mm: 02004



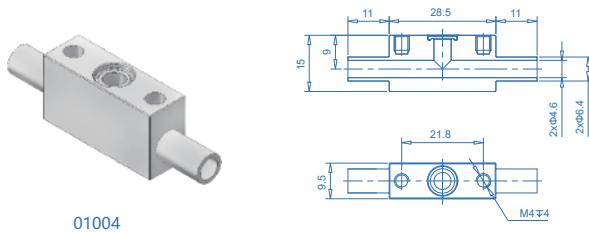
Pitch 35.5mm: 02005
Pitch 30mm: 02006



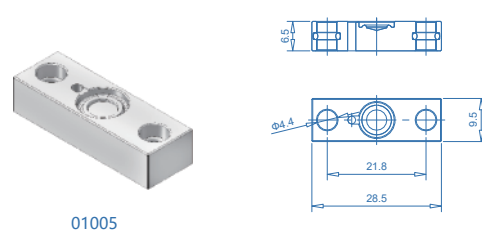
01001



01003



01004

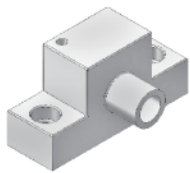


01005

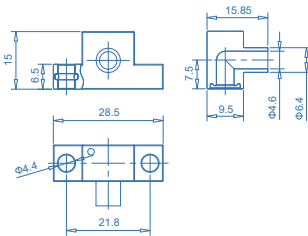


Substrates
VIB Series (W-seal)

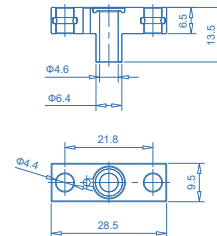
Dimensions (mm)



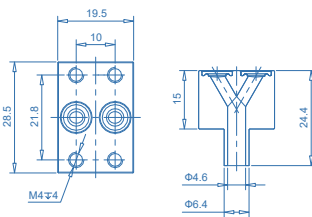
01006



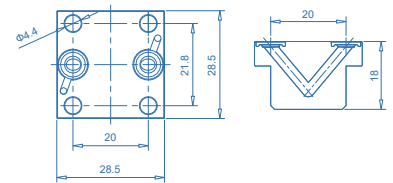
01007



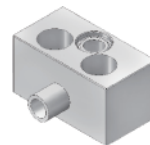
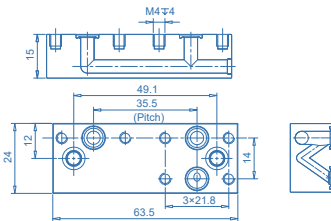
02010



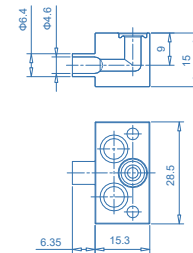
02011



Pitch 35.5mm: 03001
Pitch 30mm: 03002



01008



01009

