

VIGOUR

We offer solutions regarding your ideas!

ULTRA HIGH PURITY GAS SYSTEM

Gas
Control
Solutions



VUPS

VHPS

VIGS

VGDS

VIGOUR

PRECISE MANUFACTURING SERVING THE WORLD

BRAND INTRODUCTION

VIGOUR leads in technological innovation, adhering to the core principles of "safety, ultra-cleanliness, and pinpoint precision." Our mission is to provide gas control systems that are safe, stable, reliable, and customized to meet the needs of industrial manufacturing processes. By ensuring these systems operate securely and continuously, we drive industry progress and enable smooth industrial upgrades.



SAFETY



STEADINESS



RELIABILITY

ACTURING ORLD



ABOUT VIGOUR



VIGOUR is an internationally leading provider of gas control system solutions. With operations in three major offices and production centers worldwide, we integrate production, sales, and R&D. Vigour specialize in creating equipment for gas pressure control, gas supply systems, monitoring systems, and instrumentation for industries like:

- Semiconductors: Providing complete gas control system solutions for processes like etching, diffusion, ion implantation, and thin-film deposition.
- Photovoltaics
- Hydrogen Energy
- Laboratory Applications

VIGOUR's been recognized as a "specialized, sophisticated, distinctive, and innovative" enterprise and a high-tech enterprise globally. We are certified under EU CE (PED ISO 2503), ISO 9001, ISO14001, ISO45001, RoHS, and CGA, with our own invention patents.



VSR-50UB Series

Single stage pressure regulator

Surface finish: 10/25 µin. Ra

Inlet pressure: 150 psig

Outlet pressure: Vac to /10/30/60/100 psig

Cv: 0.06 / 0.1

Material: 316L



VSR-100UB Series

Single stage pressure regulator

Surface finish: 10/25 µin. Ra

Inlet pressure: 300/3500 psig

Outlet pressure: Vac to /10/30/60/100/150 psig

Cv: 0.09 / 0.15

Material: 316L



VSR-1000UB Series

Single stage pressure regulator

Surface finish: 10/25 µin. Ra

Inlet pressure: 300/3500 psig

Outlet pressure: Vac to /10/30/60/100/150 psig

Cv: 0.09 / 0.15

Material: 316L



VSR-210UB Series

Single stage pressure regulator

Surface finish: 10/25 µin. Ra

Inlet pressure: 300/1700/3000 psig

Outlet pressure: Vac to /30/60/100/150/250 psig

Cv: 0.65 / 1.1

Material: 316L



VSR-410UB Series

Single stage pressure regulator

Surface finish: 10/25 µin. Ra

Inlet pressure: 300/2300/3000 psig

Outlet pressure: Vac to /30/60/100/150 psig

Cv: 0.45

Material: 316L



VSR-510UB Series

Single stage pressure regulator

Surface finish: 10/25 µin. Ra

Inlet pressure: 300/3500 psig

Outlet pressure: Vac to /30/60/100/150 psig

Cv: 0.09 / 0.15

Material: 316L



VSR-610UB Series

Single stage pressure regulator

Surface finish: 10/25 µin. Ra

Inlet pressure: 300/3500 psig

Outlet pressure: Vac to /10/30/60/100 psig

Cv: 0.13

Material: 316L



VSR-710UB Series

Dual stage pressure regulator

Surface finish: 10/25 µin. Ra

Inlet pressure: 3500 psig

Outlet pressure: Vac to /30/60/100 psig

Cv: 0.05 / 0.07

Material: 316L



VSR-910UB Series

Single stage pressure regulator

Surface finish: 10/15 µin. Ra

Inlet pressure: 800/1700/3000 psig

Outlet pressure: Vac to /30/60/100/150 psig

Cv: 3.0 / 4.0

Material: 316L



VSR-911UB Series

Single stage pressure regulator

Surface finish: 10/15 µin. Ra

Inlet pressure: 800/1700/3000 psig

Outlet pressure: 300 psig

Cv: 3.0 / 4.0

Material: 316L



VSR-920UB Series

Single stage pressure regulator

Surface finish: 10 µin. Ra

Inlet pressure: 300 psig

Outlet pressure: Vac to /30/60/100/150 psig

Cv: 1.6

Material: 316L



VSR-930UB Series

Single stage pressure regulator

Surface finish: 10 µin. Ra

Inlet pressure: 5800 psig

Outlet pressure: 25~500 / 100~2500 psig

Cv: 0.09 / 0.15

Material: 316L



VSR-50UC Series

Single stage pressure regulator	
Surface finish:	5/7/10 µin. Ra
Inlet pressure:	150 psig
Outlet pressure:	Vac to /10/30/60/100 psig
Cv:	0.06 / 0.1
Material:	316L secondary remelt



VSR-100UC Series

Single stage pressure regulator	
Surface finish:	5/7/10 µin. Ra
Inlet pressure:	300/3500 psig
Outlet pressure:	Vac to /10/30/60/100/150 psig
Cv:	0.09 / 0.15
Material:	316L secondary remelt



VSR-1000UC Series

Single stage pressure regulator	
Surface finish:	5/7/10 µin. Ra
Inlet pressure:	300/3500 psig
Outlet pressure:	Vac to /10/30/60/100/150 psig
Cv:	0.09 / 0.15
Material:	316L secondary remelt



VSR-210UC Series

Single stage pressure regulator	
Surface finish:	5/7/10 µin. Ra
Inlet pressure:	300/1700/3000 psig
Outlet pressure:	Vac to /30/60/100/150/250 psig
Cv:	0.65 / 1.1
Material:	316L secondary remelt



VSR-410UC Series

Single stage pressure regulator	
Surface finish:	5/7/10 µin. Ra
Inlet pressure:	300/2300/3000 psig
Outlet pressure:	Vac to /30/60/100/150 psig
Cv:	0.45
Material:	316L secondary remelt



VSR-510UC Series

Single stage pressure regulator	
Surface finish:	5/7/10 µin. Ra
Inlet pressure:	300/3500 psig
Outlet pressure:	Vac to /30/60/100/150 psig
Cv:	0.09 / 0.15
Material:	316L secondary remelt



VSR-610UC Series

Single stage pressure regulator	
Surface finish:	5/7/10 µin. Ra
Inlet pressure:	300/3500 psig
Outlet pressure:	Vac to /10/30/60/100 psig
Cv:	0.13
Material:	316L secondary remelt



VSR-710UC Series

Dual stage pressure regulator	
Surface finish:	5/7/10 µin. Ra
Inlet pressure:	3500 psig
Outlet pressure:	Vac to /30/60/100 psig
Cv:	0.05 / 0.07
Material:	316L secondary remelt



VSR-920UC Series

Single stage pressure regulator	
Surface finish:	5/7/10 µin. Ra
Inlet pressure:	300 psig
Outlet pressure:	Vac to /30/60/100/150 psig
Cv:	1.6
Material:	316L secondary remelt

**VDV32UB Series**

Diaphragm Valve

Pressure:	Max. 150 psig
Surface finish:	10 µin. Ra
Connection:	1/4" 3/8" 1/2" 3/4" VFS fitting / tube weld
Cv:	0.3 / 0.65
Material:	316L

**VDV33UB Series**

Diaphragm Valve

Pressure:	Max. 3000 psig
Surface finish:	10 µin. Ra
Connection:	1/4" 3/8" 1/2" VFS fitting / tube weld
Cv:	0.27 / 0.5
Material:	316L

**VDV40UB Series**

Diaphragm Valve

Pressure:	Max. 3000 psig
Surface finish:	10 µin. Ra
Connection:	1/4" 3/8" VFS fitting / tube weld
Cv:	manual=0.29 , pneumatic=0.23
Material:	316L

**VDV42UB Series**

Diaphragm Valve (The valve seat can be replaced)

Pressure:	Max. 300 psig
Surface finish:	10 µin. Ra
Connection:	1/4" 3/8" 1/2" VFS fitting / tube weld
Cv:	0.3 / 0.65
Material:	316L

**VDV52UB Series**

Diaphragm Valve

Pressure:	Max. 300 psig
Surface finish:	10 µin. Ra
Connection:	1/4" 3/8" 1/2" VFS fitting / tube weld
Cv:	0.3 / 0.65
Material:	316L

**VDV22UB Series**

Diaphragm Valve

Pressure:	Max. 150 psig
Surface finish:	10 µin. Ra
Connection:	1/4" 1/2" VFS fitting
Cv:	0.3 / 0.65
Material:	316L

**VDV36UB Series**

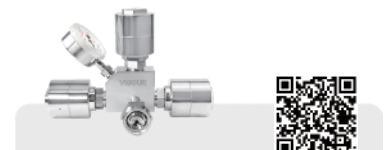
Low-pressure Diaphragm Valve Manifold

Pressure:	Max. 150 psig
Surface finish:	10 µin. Ra
Connection:	1/4" VFS fitting / tube weld
Cv:	0.3
Material:	316L

**VDV46UB Series**

High-pressure Diaphragm Valve Manifold

Pressure:	Max. 3000 psig
Surface finish:	10 µin. Ra
Connection:	1/4" VFS fitting / tube weld
Cv:	0.1
Material:	316L

**VDV48UB Series**

Ultra High Purity Purging Block

Pressure:	Max. 3000 psig
Surface finish:	10 µin. Ra
Connection:	1/4" VFS fitting / tube weld
Cv:	0.1
Material:	316L

**VDV37UB Series**

Diaphragm Valve

Pressure:	Manual Max. 300 / Pneumatic Max. 250 psig
Surface finish:	10 µin. Ra
Connection:	3/4" 1/2" 3/8" VFS fitting / tube weld
Cv:	2.8
Material:	316L

**VDV38UB Series**

Diaphragm Valve

Pressure:	Max. 1300 / 3000 psig
Surface finish:	10 µin. Ra
Connection:	1/4" 1/2" 3/4" 3/8" VFS fitting / tube weld
Cv:	manual=1.0, pneumatic=1.0 / 0.7
Material:	316L

**VDV39UB Series**

Diaphragm Valve

Pressure:	Max. 300 psig
Surface finish:	10 µin. Ra
Connection:	3/4" 1/2" VFS fitting / tube weld
Cv:	2.8
Material:	316L



VDV32UC Series

Diaphragm Valve	
Pressure:	Max. 150 psig
Surface finish:	7 µin. Ra
Connection:	1/4" 3/8" 1/2" 3/4" VFS fitting / tube weld
Cv:	0.3 / 0.65
Material:	316L secondary remelt



VDV33UC Series

Diaphragm Valve	
Pressure:	Max. 3000 psig
Surface finish:	7 µin. Ra
Connection:	1/4" 3/8" 1/2" VFS fitting / tube weld
Cv:	0.27 / 0.5
Material:	316L secondary remelt



VDV40UC Series

Diaphragm Valve	
Pressure:	Max. 3000 psig
Surface finish:	7 µin. Ra
Connection:	1/4" 3/8" VFS fitting / tube weld
Cv:	manual=0.29, pneumatic=0.23
Material:	316L secondary remelt



VDV42UC Series

Diaphragm Valve	
Pressure:	Max. 300 psig
Surface finish:	7 µin. Ra
Connection:	1/4" 3/8" 1/2" VFS fitting / tube weld
Cv:	0.3 / 0.65
Material:	316L secondary remelt



VDV52UC Series

Diaphragm Valve	
Pressure:	Max. 300 psig
Surface finish:	7 µin. Ra
Connection:	1/4" 3/8" 1/2" VFS fitting / tube weld
Cv:	0.3 / 0.65
Material:	316L secondary remelt



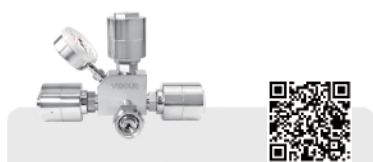
VDV36UC Series

Low-pressure Diaphragm Valve Manifold	
Pressure:	Max. 150 psig
Surface finish:	7 µin. Ra
Connection:	1/4" VFS fitting / tube weld
Cv:	0.3
Material:	316L secondary remelt



VDV46UC Series

High-pressure Diaphragm Valve Manifold	
Pressure:	Max. 3000 psig
Surface finish:	7 µin. Ra
Connection:	1/4" VFS fitting / tube weld
Cv:	0.1
Material:	316L secondary remelt



VDV48UC Series

Ultra High Purity Purging Block	
Pressure:	Max. 3000 psig
Surface finish:	7 µin. Ra
Connection:	1/4" VFS fitting / tube weld
Cv:	0.1
Material:	316L secondary remelt



VDV37UC Series

Diaphragm Valve	
Pressure:	Manual Max. 300 / Pneumatic Max. 250 psig
Surface finish:	7 µin. Ra
Connection:	3/4" 1/2" 3/8" VFS fitting
Cv:	2.8
Material:	316L secondary remelt



VDV38UC Series

Diaphragm Valve	
Pressure:	Max. 1300 / 3000 psig
Surface finish:	7 µin. Ra
Connection:	1/4" 1/2" 3/4" 3/8" VFS fitting / tube weld
Cv:	manual=1.0, pneumatic=1.0 / 0.7
Material:	316L secondary remelt



VUBV Series

Bellows Valve

Manual pressure:	Vacuum to 500 psig
Pneumatic pressure:	Vacuum to 125 psig
Connection:	1/4" VFS / Tube fitting / Tube weld
Cv:	0.3
Material:	316L



VUBV2 Series

Bellows Valve

Manual pressure:	Vacuum to 375 psig
Pneumatic pressure:	Vacuum to 250 psig
Connection:	3/4" 1" 1.5" 2" VFS fitting / Tube weld
Cv:	14.5 / 21 / 46 / 52
Material:	316L



VALD Series

Atomic Layer Deposition Valve

Pressure:	Max. 145 psig
Connection:	1/4" 1/2" VFS fitting / tube weld
Optional:	Solenoid pilot valve Electronic actuator-position sensor
Cv:	0.27 / 0.62
Material:	316L / 316L secondary remelt



VBMV Series

Metering Bellows Valve

Pressure:	Max. 700 psig
Connection:	1/4" 6mm Tube fitting 1/4" VFS male, 3/8" Tube weld
Cv:	0.019 / 0.3
Material:	316



VMV Series

Metering Valve

Pressure:	Max. 2000 psig
Connection:	1/16" 1/4" 1/8" 6mm 3mm tube fitting 1/4" 1/8" NPT, 1/4" VFS fitting
Cv:	0.004 / 0.03 / 0.16
Material:	316



VUP Series

Gas Stick

Series:	100TG / 200TG / 300TG
Inlet pressure:	Max. 300 psig
Outlet pressure:	Vac to /10/30/60/100/150 psig
Connection:	1/4" 1/2" VFS fitting
Material:	316L



VUP-1U Series

Pressure Control Panel

Type:	Single side type
Inlet pressure:	300 / 3500 psig
Outlet pressure:	Vac to 10/30/60/100/150 psig
Cv:	0.09 / 0.15



VUP-2U Series

Pressure Control Panel

Type:	Two-sided type
Inlet pressure:	300 / 3500 psig
Outlet pressure:	Vac to 10/30/60/100/150 psig
Cv:	0.09 / 0.15



VUP-3U Series

Pressure Control Panel

Type:	Automatic change-over
Inlet pressure:	300 / 3500 psig
Outlet pressure:	Vac to 10/30/60/100/150 psig
Cv:	0.09 / 0.15



VUP-4U Series

Pressure Control Panel

Type:	Single side type
Inlet pressure:	300 / 1700 / 3000 psig
Outlet pressure:	Vac to 30/60/100/150 psig
Cv:	0.65 / 1.1 (HF optional)



VUP-5U Series

Pressure Control Panel

Type:	Two-sided type
Inlet pressure:	300 / 1700 / 3000 psig
Outlet pressure:	Vac to 30/60/100/150 psig
Cv:	0.65 / 1.1 (HF optional)



VUP-6U Series

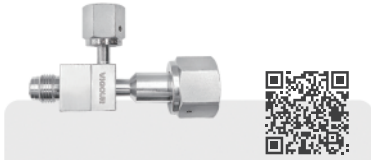
Pressure Control Panel

Type:	Automatic change-over
Inlet pressure:	300 / 1700 / 3000 psig
Outlet pressure:	Vac to /30/60/100/150 psig
Cv:	0.65 / 1.1 (HF optional)



VVG Series

Vacuum Generator	
Maximum vacuum:	-90 kPa
Vacuum port pressure:	Max. 70psig
Outlet connection:	1/2" VFS fitting
Vacuum connection:	1/4" VFS fitting
Material:	316L



VVG1 Series

Vacuum Generator	
Maximum vacuum:	-88 kPa
Vacuum port pressure:	Max. 3500 psig
Outlet connection:	1/2" VFS fitting, 3/8" Tube weld
Vacuum connection:	1/4" VFS fitting / Tube weld
Material:	316L



VVG2 Series

Vacuum Generator	
Maximum vacuum:	-88 kPa
Vacuum port pressure:	Max. 3000 psig
Outlet connection:	1/2" VFS fitting, 3/8" Tube weld
Vacuum connection:	1/4" VFS fitting / Tube weld
Material:	316L



VCVH Series

Check Valve	
Working pressure:	Max. 4500 psig
Opening pressure:	1/3 psig, 1psig
Connection:	1/4" 1/2" 3/4" VFS fitting
Cv:	0.67 / 1.8 / 4.7
Body material:	316L



VUCV Series

All-Welded Check Valve	
Working pressure:	Max. 3000 psig
Opening pressure:	<2 psig
Connection:	1/4" 1/2" VFS fitting
Cv:	0.55 / 0.7
Body material:	316L / Hastelloy® C276



VCA Series

Adjustable Check Valve	
Working pressure:	Max. 3000 psig
Opening pressure:	3~350psig
Connection:	1/4" 6mm 8mm Tube fitting, 1/4" VFS male / NPT male
Body material:	316L



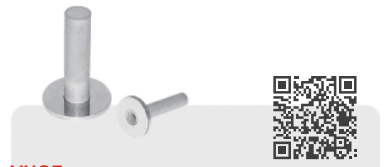
VFH Series

Filter	
Filtration accuracy:	0.5/2/5/10/20/40/70 µm
Connection:	1/4" 1/2" VFS fitting
Gasket material:	316L
Body material:	316L



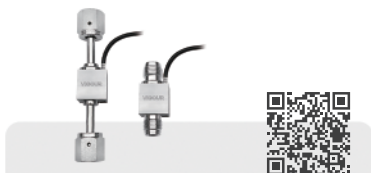
VUF Series

Filter	
Filtration accuracy:	0.003µm
Connection:	1/4" 1/2" VFS fitting
Filter material:	PTFE
Shell material:	316L



VUGF Series

Gasket Filter	
Filtration accuracy:	0.003µm
Gasket size:	1/4" 3/8" 1/2" VFS Gasket
Gasket material:	316L / Nickel
Body material:	316L



VEFS1 Series

Flow Switch	
Pressure:	vacuum to 3500 psig
Accuracy:	±10%
Installation:	Vertical within 8° and inlet port at the bottom
Connection:	1/4" VFS fitting / Tube weld
Material:	316L secondary remelt



VEFS2 Series

Flow Switch	
Pressure:	vacuum to 2000 / 3000 / 3500 psig
Accuracy:	±20%
Installation:	Horizontal / Vertical
Connection:	3/4" 1/2" VFS fitting / Tube weld
Material:	316L



VRU / VGU Series

Pressure Gauge	
Type:	Radial direction / Axial direction
Scale:	bar / psig dual scale
Connection:	1/4" VFS fitting
Size:	2"
Accuracy:	Grade A per ASME B40.1



VRT / VGT Series

Pressure Gauge

Type:	Radial direction / Axial direction
Scale:	bar / psig dual scale
Connection:	1/4" 6mm Tube fitting
Size:	2"
Accuracy:	Grade A per ASME B40.1



VGU20SE / VRU20SE Series

Contact Gauge

Type:	Radial direction / Axial direction
Scale:	bar / psig dual scale
Connection:	1/4" VFS fitting
Size:	2"
Accuracy:	±2.5%



VCG20S / VRG20S Series

Contact Gauge

Type:	Radial direction / Axial direction
Scale:	bar / psig dual scale
Connection:	1/4" VFS fitting
Size:	2"
Accuracy:	Grade A per ASME B40.1



VUC Series

Cylinder Connection

Connection:	6mm Tube fitting
	1/4" 6mm Tube weld
Surface finish:	10/15 µin. Ra
Material:	316L



VUC DISS Series

Cylinder Connection

Connection:	1/4" VFS fitting
	1/4" 1/2" Tube weld
Gasket material:	Nickle / PCTFE
Body material:	316L



Connector Fitting Series

VFS / Micro Weld / Tube Butt Weld / Weld Assemble

Type:	Long Elbow / Reducing Long Elbow
	Long Tee / Reducing Long Tee
	Reducing Long Union
	Fitting Lock Device

VIGOUR

VUPS
ULTRA HIGH PURITY
GAS SYSTEM



VHPS
HIGH PURITY
GAS SYSTEM



VIGS
INTEGRATED
GAS SYSTEM



VGDS
GAS DELIVERY
SYSTEM



High-efficiency response



Accurate management and control



Customized service

VIGOUR

We offer solutions regarding your ideas!

www.vigourco.com

Add: Floor 2, Building 26, Lane 5355, Beisong Road,
Songjiang District, Shanghai China.

Phone: (86) 021-6760 0902

E-mail: info@vigourco.com



Scan the QR code to get the
product electronic catalog!

Follow us for more VIGOUR news!

