

VIGOUR

We offer solutions regarding your ideas!

INTEGRATED GAS SYSTEM

Gas
Control
Solutions



VIGS
VHPS
VUPS
VGDS

Elgiloy[®] is registered trademark of Elgiloy Specialty Metals.
Hastelloy[®] is registered trademark of Haynes International, Inc.
Viton[®] and Kalrez[®] are registered trademarks of Dupont.
VespeI[®] is registered trademark of Dupont Specialty Metals.

Table Of Contents |

VIGOUR

Pressure Regulators | P2

VIR Series p2

Diaphragm Valves | P3

VID Series p3

Flow Control Valves | P4

VIM Series p4

Check Valves | P5~7

VICV1 Series p5

VICV2 Series p6

VIMCV Series p7

C-seal Substrates | P8~11

VIB Series p8~11

C-seal Gaskets | P12

VIG Series p12

W-seal Substrates | P13~15

VIB Series p13~15

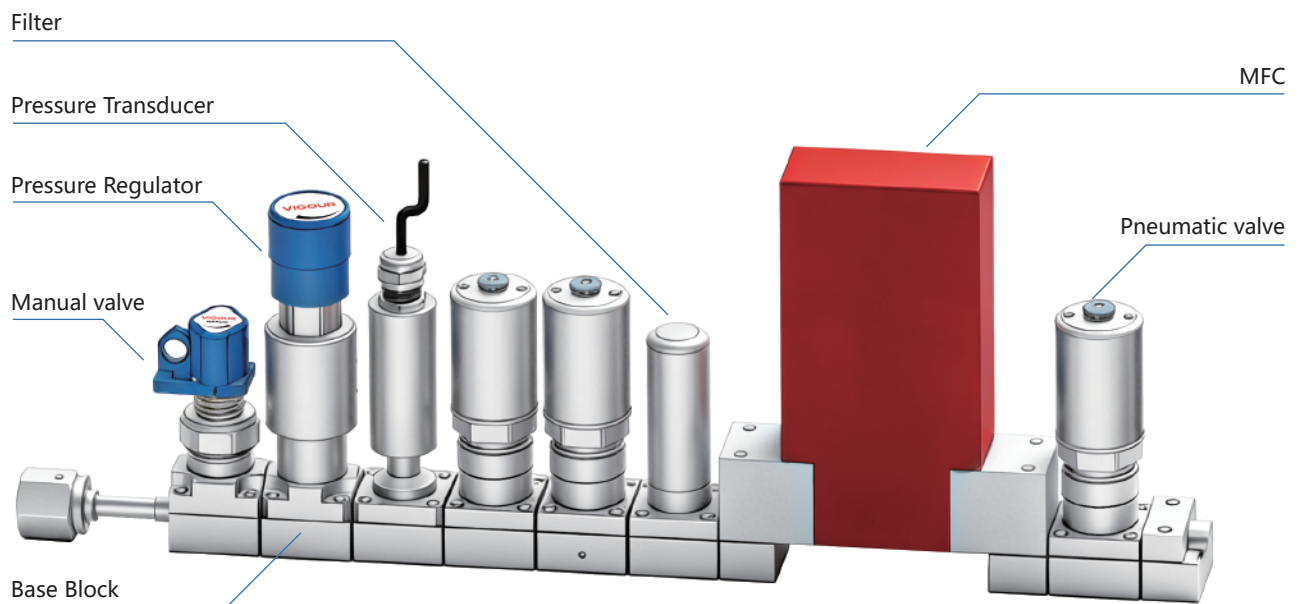
W-seal Gaskets | P16

VIG Series p16

Integrated Gas Systems

Product Features

- Used for gas control in the semiconductor industry.
- Modular design
- All components are surface-mounted in accordance with SEMI standards
- Size is approximately 1/3 that of traditional panels
- SEMI-compliant materials, electropolishing and orbital welding
- W-seal and C-seal optional
- Double bagged in cleanroom
- All products except brackets are manufactured in accordance with VS001A



Technical Data

Process Specification	Ultra-High Purity
Surface Finish:	Max. 5 µin. Ra
body:	316L Secondary Remelt

IGS Pressure Regulators VIR Series

Product Features

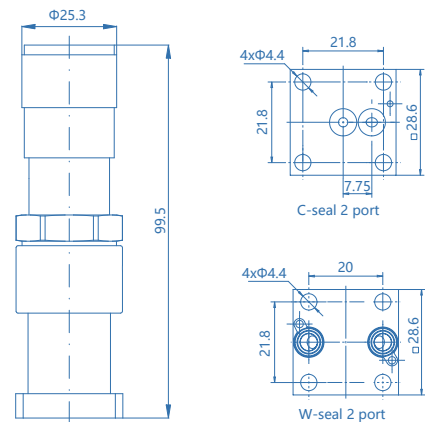
- Metal-to-metal seal to atmosphere
- W-seal and C-seal optional
- Surface finish: Max. 5 µin. Ra
- Material: 316L Secondary Remelt
- 100% Helium leak tested



Technical Data

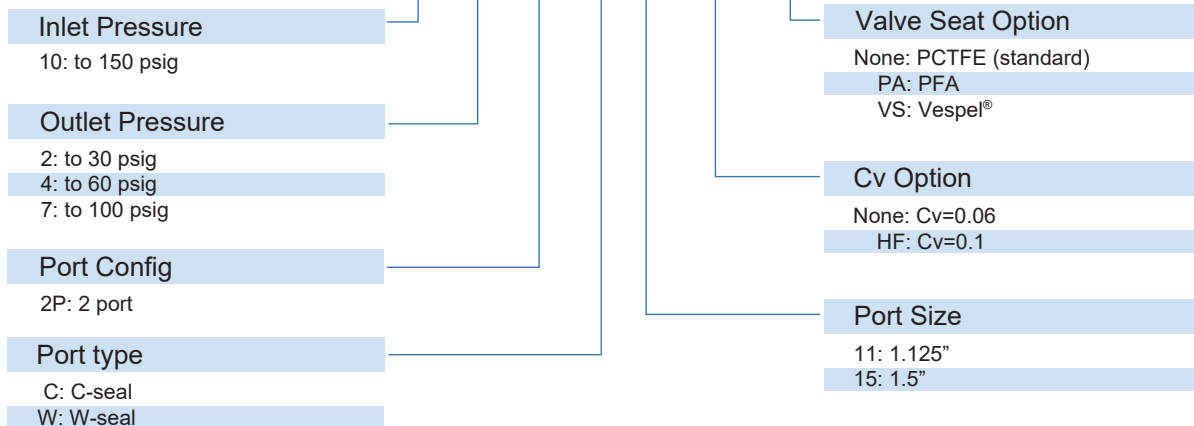
Max. Working Pressure:	150 psig
Max. Working Temp:	-40°F~140°F (-40°C~60°C)
Outlet Pressure:	0~100 psig
Surface Finish:	Max. 5 µin. Ra
Materials	
Body:	316L Secondary Remelt
Valve Seat:	PCTFE (PFA / Vespel® optional)
Diaphragm:	Hastelloy® C276
Leak Rate: (to atmosphere)	1x10 ⁻⁹ mbar-l/s He
(via seat)	1x10 ⁻⁸ mbar-l/s He
Flow Capacity:	Cv=0.06 (Cv=0.1 optional)

Dimensions (mm)



Ordering Information

VIR - 10 - 2 - 2P - C 11 - HF - VS



IGS Diaphragm Valves

IGS Diaphragm Valves VID Series

Product Features

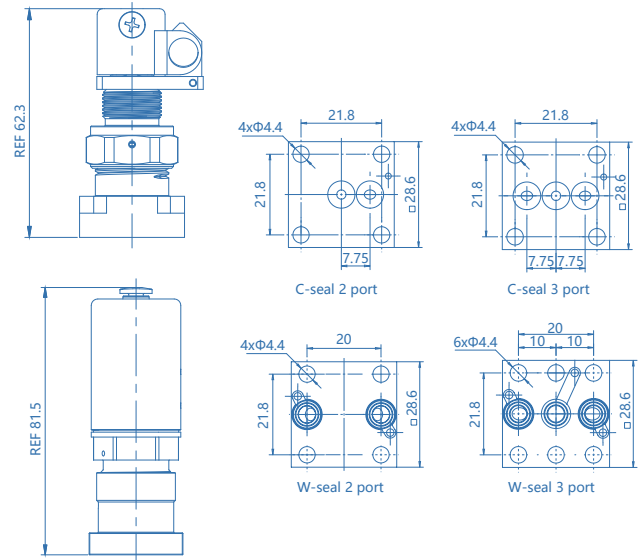
- W-seal and C-seal optional
- No dead-end design
- Wetted surface treated with EP, max. 5 µin. Ra
- Material: 316L Secondary Remelt
- 100% Helium leak tested



Technical Data

Max. Working Pressure:	150 psig
Max. Working Temp:	PCTFE 14°F~176°F(-10°C~80°C) PFA 14°F~302°F(-10°C~150°C)
Surface Finish:	Max. 5 µin. Ra
Materials	
Body:	316L Secondary Remelt
Valve seat:	PCTFE (PFA / Vespel® optional)
Diaphragm:	Elgiloy®
Leak rate: (to atmosphere)	1x10 ⁻⁹ mbar-l/s He
(via seat)	1x10 ⁻⁹ mbar-l/s He
Flow Capacity:	Cv=0.1

Dimensions (mm)



Ordering Information

VID - M - 2P - C 11 - VS

Actuator

- M: manual actuator
- PC: pneumatic actuator, normally closed



Customized Block Valve Manifolds,
Designed and manufactured according
to customer requirements.

Valve Seat Option

- None: PCTFE (standard)
- PA: PFA
- VS: Vespel®

Port Size

- 11: 1.125"
- 15: 1.5"

Port type

- C: C-seal
- W: W-seal

port Config

- 2P: 2 port
- 3P: 3 port

IGS Flow Control Valves VIM Series

Product Features

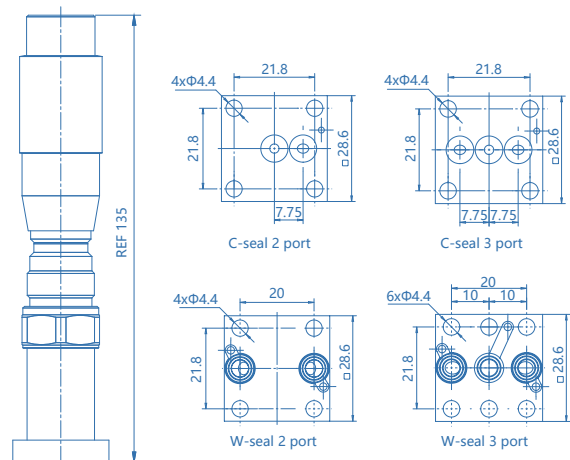
- W-seal and C-seal optional
- Wetted surface treated with EP, max. 5 µin. Ra
- Material: 316L Secondary Remelt
- 100% Helium leak tested



Technical Data

Max. Working Pressure:	150 psig
Max. Working Temp:	14°F~302°F(-10°C~150°C)
Nominal Diameter:	Φ1.0 (Φ2.5 optional)
Materials	
Body:	316L Secondary Remelt
Sealing:	Elgiloy®
Leak rate: (to atmosphere)	1x10 ⁻⁹ mbar·l/s He
(via seat)	Fixed at <1% of Cv value.
Flow Capacity:	Cv=0.03 (Φ1.0) Cv=0.065 (Φ2.5)

Dimensions (mm)



Ordering Information

VIM - A - 2P - C 11

Flow Capacity

A: Cv=0.065
B: Cv=0.03

port Config

2P: 2 port
3P: 3 port

Port Size

11: 1.125"
15: 1.5"

Port type

C: C-seal
W: W-seal

IGS Check Valves

IGS Check Valves VICV1 Series

Product Features

- W-seal and C-seal optional
- Wetted surface treated with EP, max. 5 µin. Ra
- Material: 316L Secondary Remelt
- 100% Helium leak tested

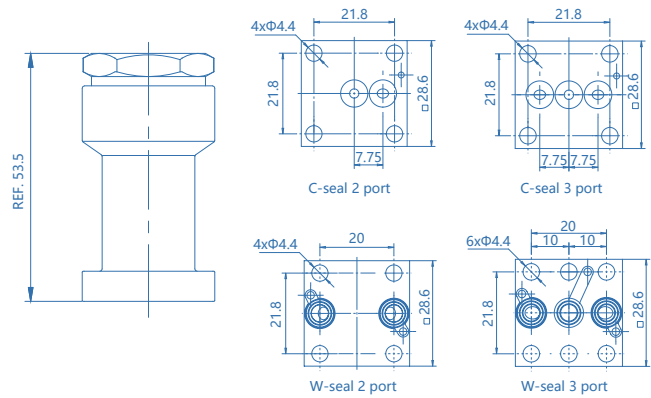


Technical Data

Max. Working Pressure:	150 psig
Max. Working Temp:	14°F~176°F (-10°C~80°C)
Surface Finish:	Max. 5µin. Ra
Cracking Pressure:	≤2 psig
Resealing Pressure:	≤5 psig (Back Pressure)
Materials	
Body:	316L Secondary Remelt
Leak Rate: (Internal)	1x10 ⁻⁹ mbar·l/s He
(External)	4x10 ⁻⁹ mbar·l/s He
Flow Capacity:	Cv=0.2

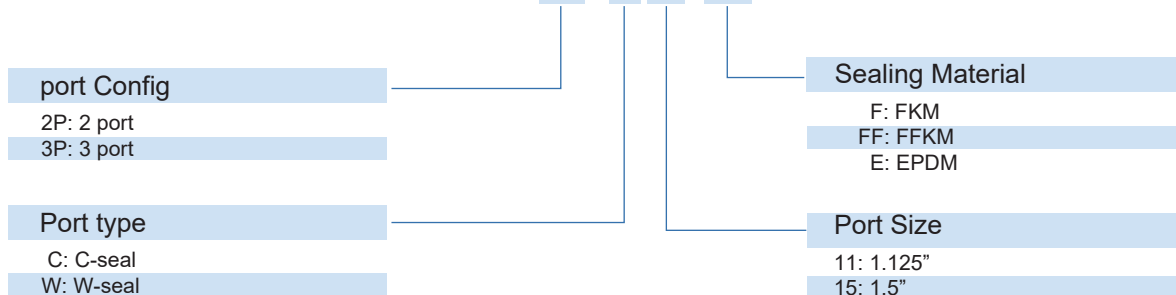
*When first used or left unopened for a long period of time, its initial cracking pressure may be higher than the set cracking pressure.

Dimensions (mm)



Ordering Information

VICV1 - 2P - C 11 - FF



IGS Check Valves VICV2 Series

Product Features

- W-seal
- Used for pipeline purging
- Wetted surface treated with EP, max. 5 µin. Ra
- Material: 316L Secondary Remelt
- 100% Helium leak tested

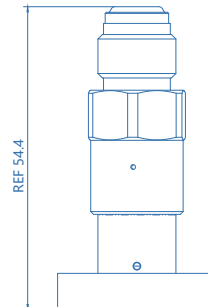
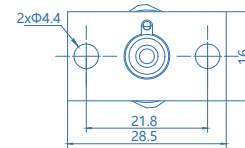


Technical Data

Max. Working Pressure:	150 psig
Max. Working Temp:	14°F~176°F (-10°C~80°C)
Surface Finish:	Max. 5µin. Ra
Cracking Pressure:	≤0.33 psig
Resealing Pressure:	≤4 psig (Back Pressure)
Materials	
Body:	316L Secondary Remelt
Leak Rate: (Internal)	1x10 ⁻⁹ mbar·l/s He
(External)	1x10 ⁻⁸ mbar·l/s He
Flow Capacity:	Cv=0.35

*When first used or left unopened for a long period of time, its initial cracking pressure may be higher than the set cracking pressure.

Dimensions (mm)



Ordering Information

VICV2 - MV4 - W11 - FF

Inlet / Outlet Connection

MV4: 1/4" VFS male
FV4: 1/4" VFS female
W11: 1.125" W-seal

Sealing Material

F: FKM
FF: FFKM
E: EPDM

Modular Check Valves

IGS Modular Check Valves VIMCV Series



Product Features

- W-seal and C-seal optional
- Compact structure, stackable in use
- Wetted surface treated with EP, max. 5 µin. Ra
- Material: 316L Secondary Remelt
- 100% Helium leak tested

Technical Data

Max. Working Pressure:	150 psig
Max. Working Temp:	14°F~176°F (-10°C~80°C)
Surface Finish:	Max. 5µin. Ra
Cracking Pressure:	≤2 psig
Reseating Pressure:	≤5 psig (back pressure)
Materials	
Body:	316L Secondary Remelt
Leak Rate: (Internal)	1x10 ⁻⁹ mbar·l/s He
Flow Capacity:	Cv=0.2

*When used for the first time or left unused for a long period, its initial cracking pressure may be higher than the set value. In principle, this check valve is only suitable for normal atmospheric environments and shall not be used in vacuum conditions.

Ordering Information

VIMCV - 3P - C 11- FF

Port Config

- 2P: 2 port
- 3P: 3 port

Port type

- C: C-seal
- W: W-seal

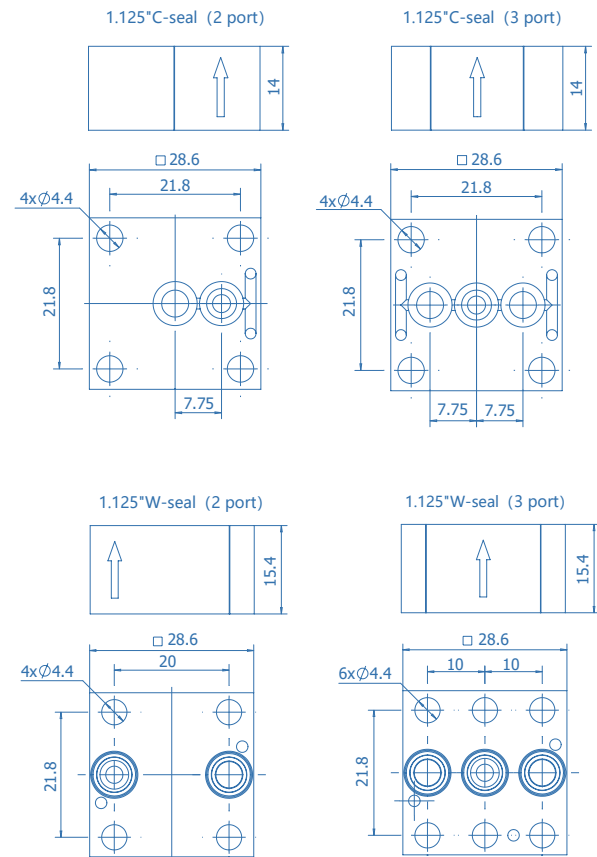
Sealing Material

- F: FKM
- FF: FFKM
- E: EPDM

Port Size

- 11: 1.125"
- 15: 1.5"

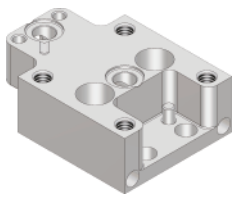
Dimensions (mm)



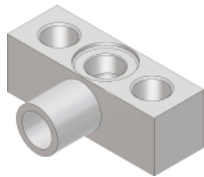
Substrates VIB Series (C-seal)

Product Features

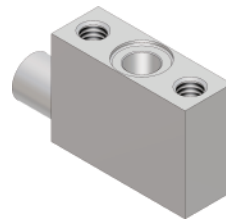
- C-seal
- Non-fixed installation to ensure sealing performance
- Wetted surface treated with EP, max. 5 µm. Ra
- Material: 316L Secondary Remelt



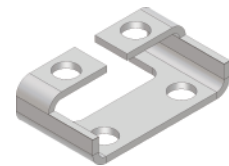
Substrate



Flange



Manifolds



Bracket

Ordering Information

VIB11 - C - 32205

Port Size
11: 1.125"
15: 1.5"

Port Type
C: C-seal

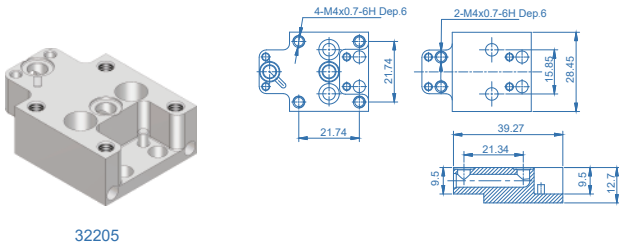
Part Number
32205
32206
32208
32209
32210
.....

*Other type, Please consult the factory
*Please refer to the detailed size diagram

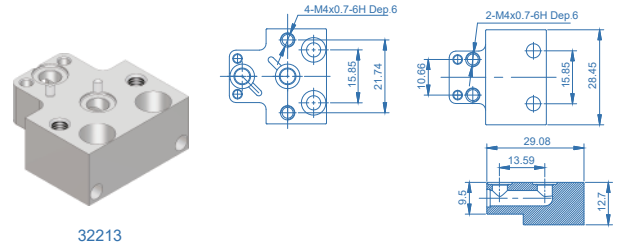
Substrates

Substrates VIB Series (C-seal)

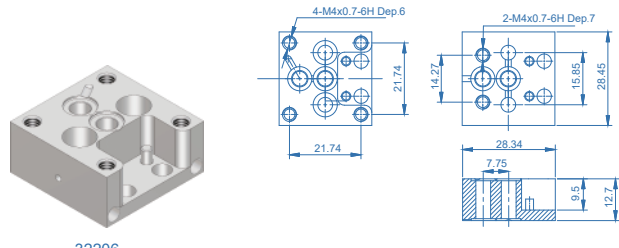
Dimensions (mm)



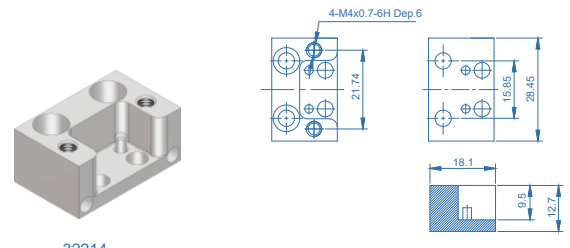
32205



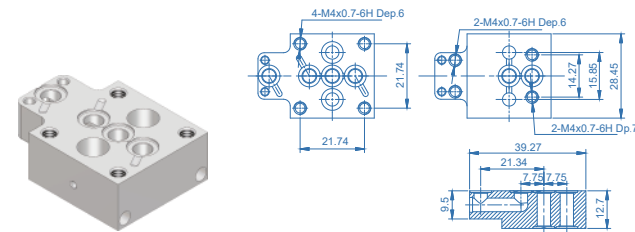
32213



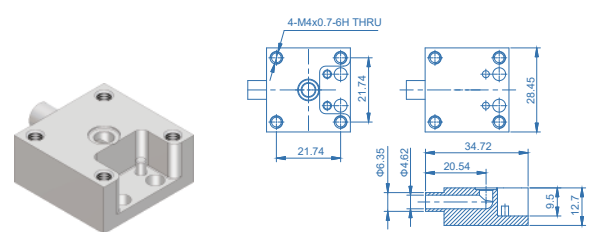
32206



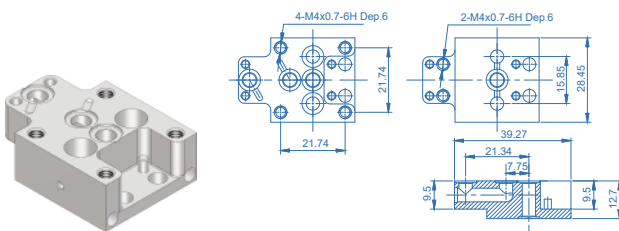
32214



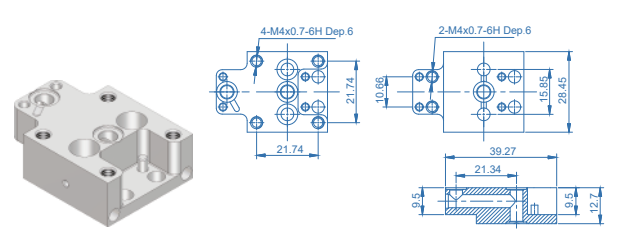
32208



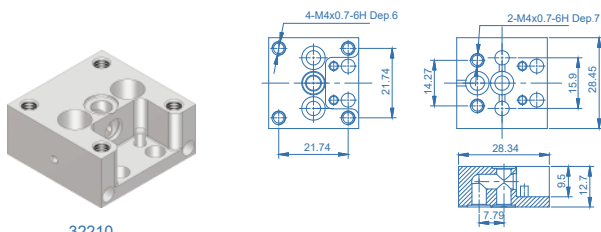
34476



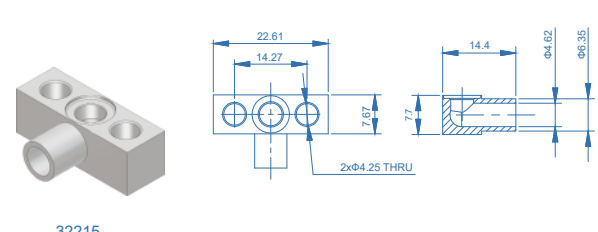
32209



32212



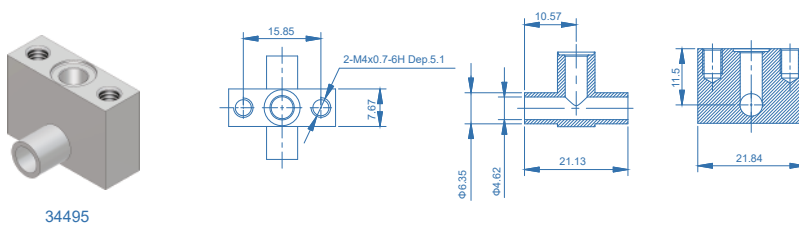
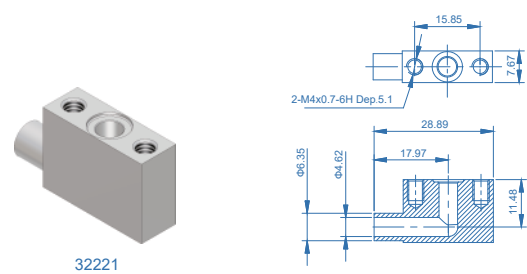
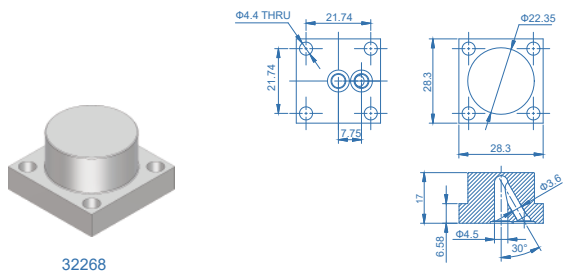
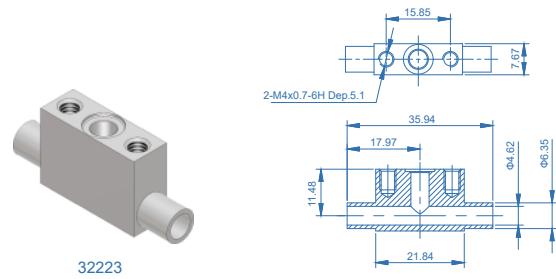
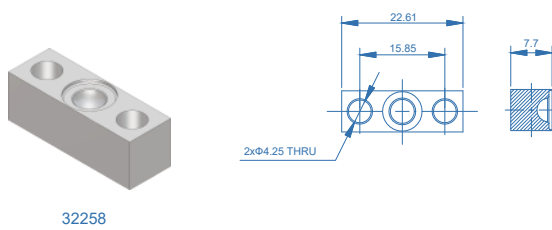
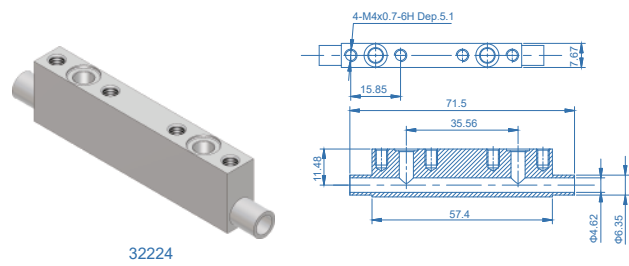
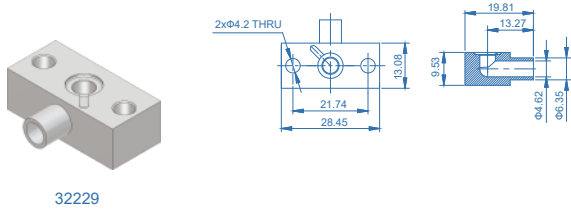
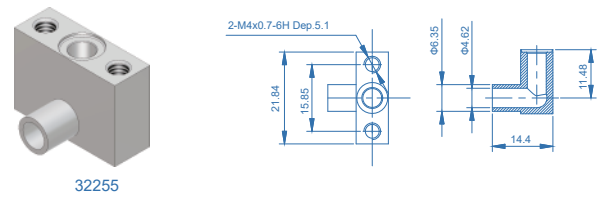
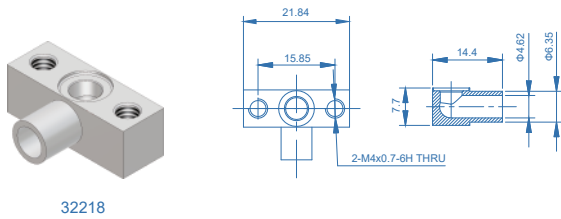
32210



32215

Substrates VIB Series (C-seal)

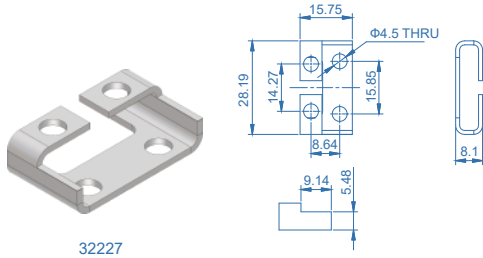
Dimensions (mm)



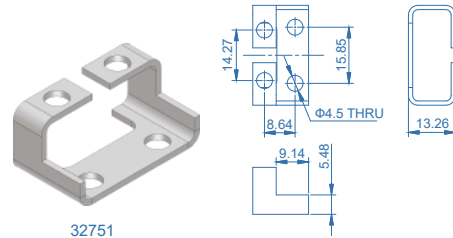
Brackets

Bracket VIB Series (C-seal)

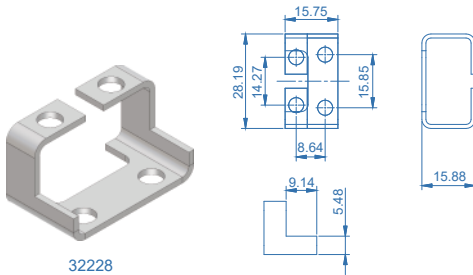
Dimensions (mm)



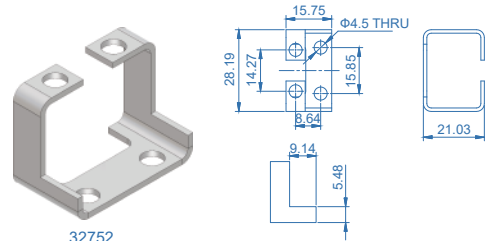
32227



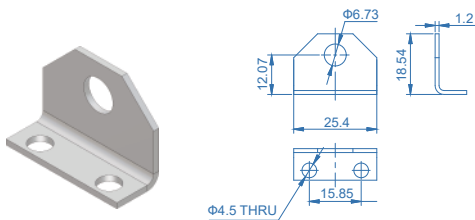
32751



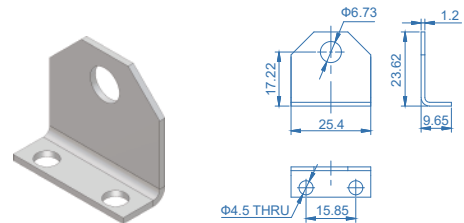
32228



32752



32245



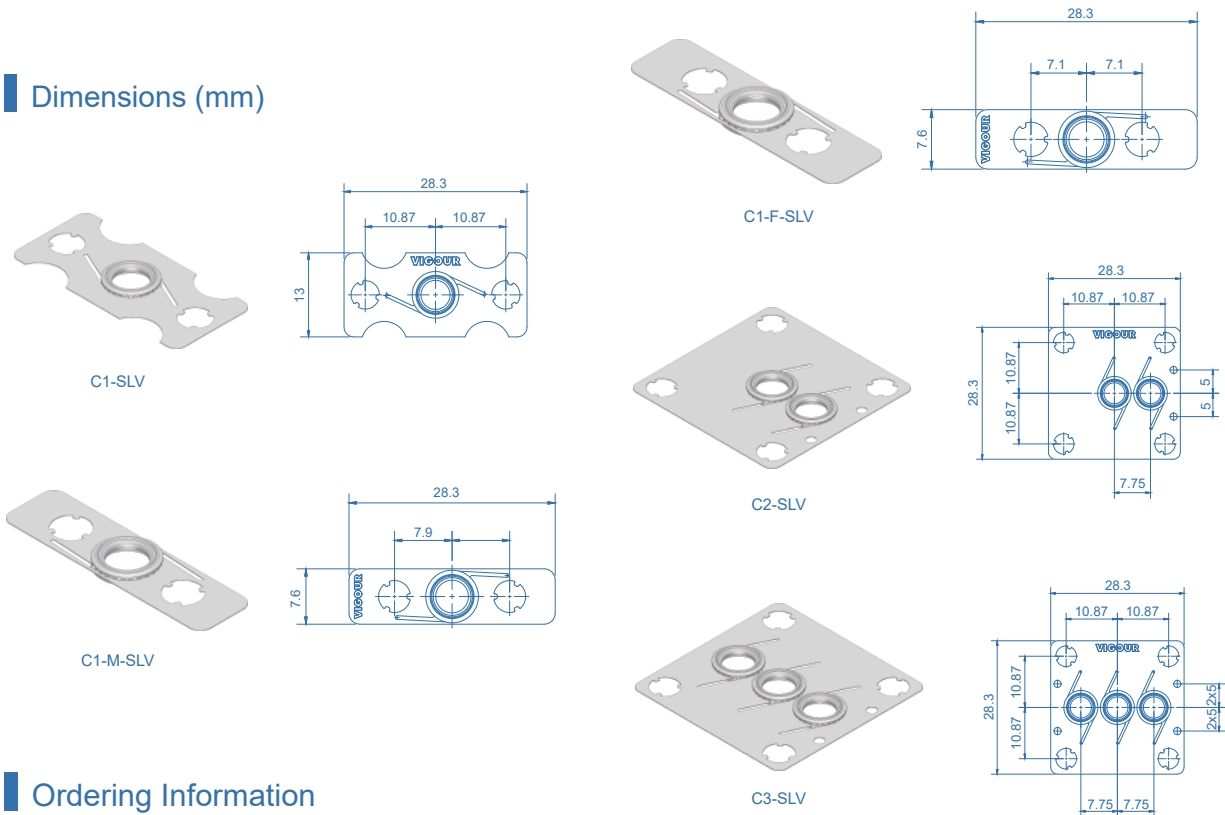
32778

Gasket VIG Series (C-seal)

Product Features

- C-seal
- Sealing faces independent from components receiving external forces
- Surface finish: max. 5 µin. Ra
- Gasket material: 316L Secondary Remelt
- Supporting part material: SS304

Dimensions (mm)



Ordering Information

VIG11 - C1 - SLV - H

Port Size

- 11: 1.125"
- 15: 1.5"

Port Type

- C: C-seal

Flow Requirement

- None: standard
- H: high flow*

*The "H" option is only applicable to 1.5" port size

Part Number

- 1-SLV
- 1-M-SLV
- 1-F-SLV
- 2-SLV
- 3-SLV

Substrates

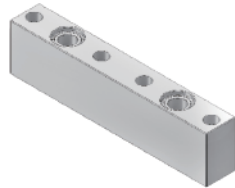
Substrates VIB Series (W-seal)

Product Features

- W-seal
- Non-fixed installation to ensure sealing performance
- Wetted surface treated with EP, max. 5 μin. Ra
- Material: 316L Secondary Remelt



Standard Substrates



1-Path Bypass Substrates



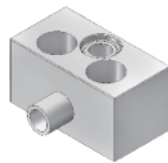
Plugs



Transition Substrates

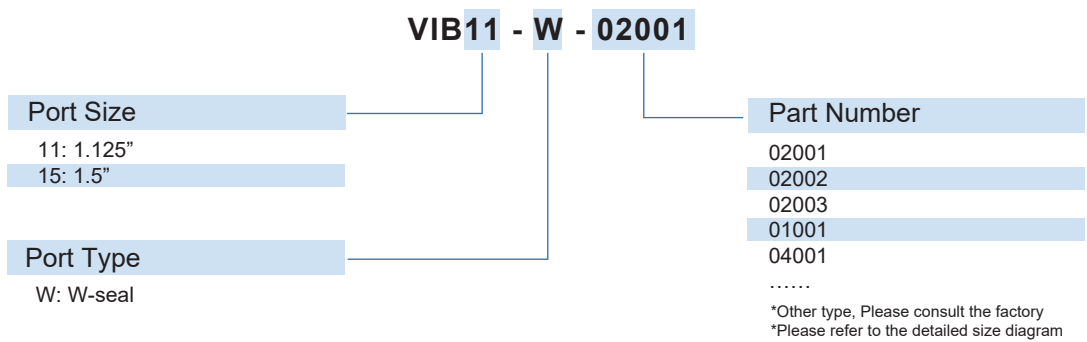


2-Path Bypass Substrates



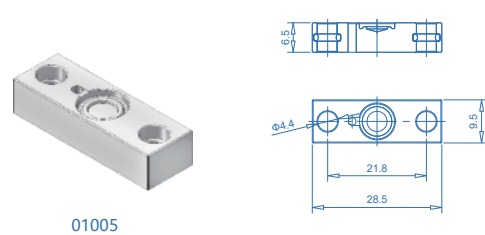
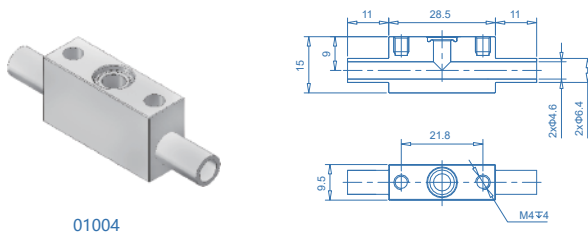
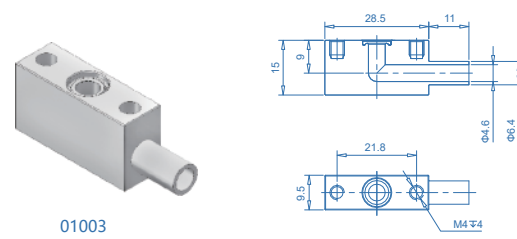
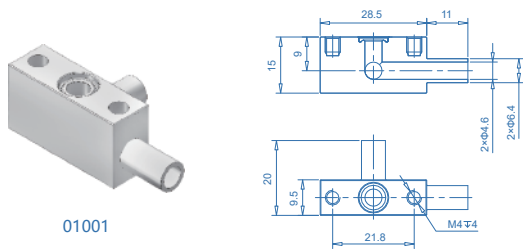
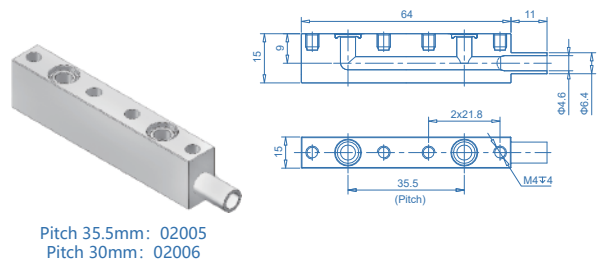
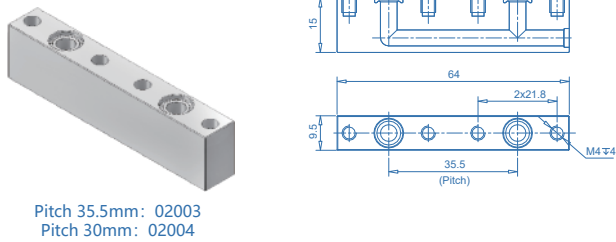
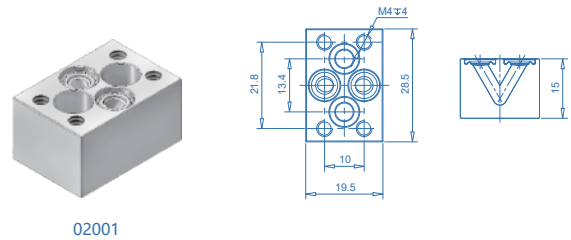
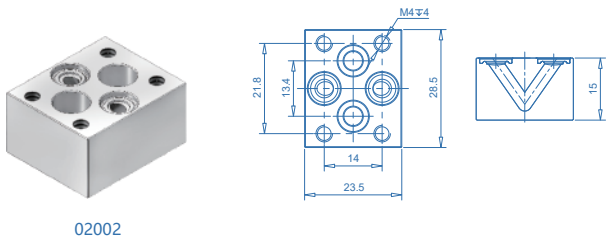
End Substrates

订购参数



Substrates VIB Series (W-seal)

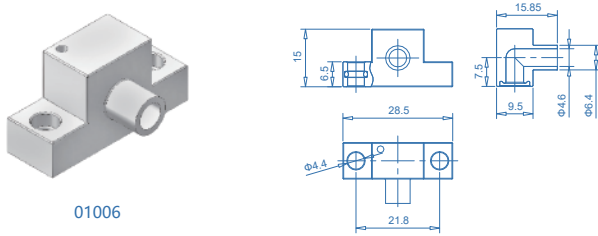
Dimensions (mm)



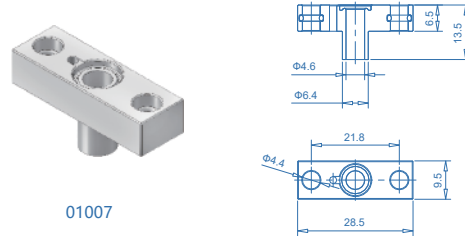
Substrates

Substrates VIB Series (W-seal)

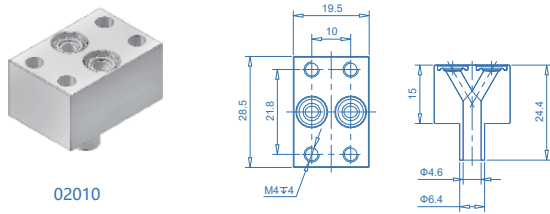
Dimensions (mm)



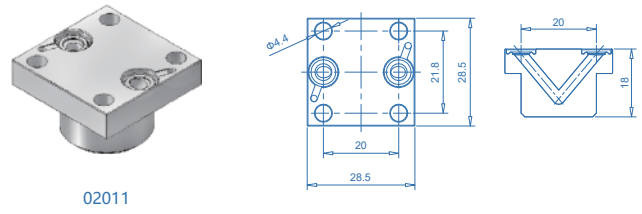
01006



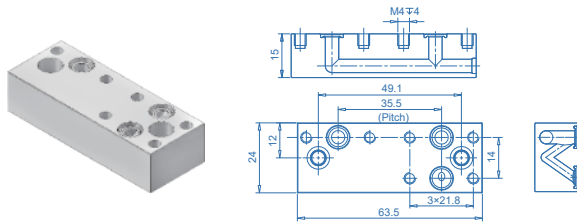
01007



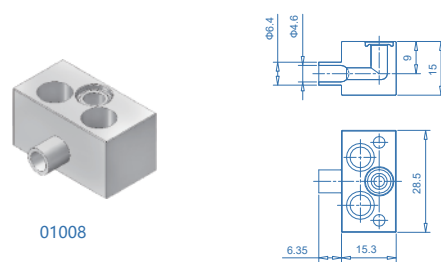
02010



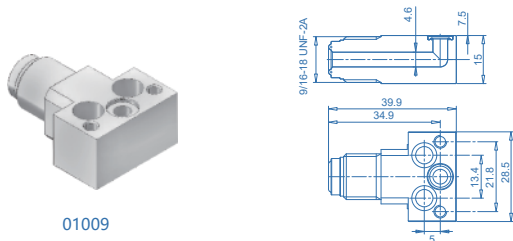
02011



Pitch 35.5mm: 03001
Pitch 30mm: 03002



01008



01009

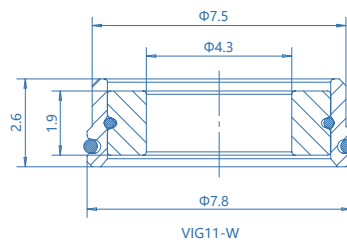
Gasket VIG Series (W-seal)

Product Features

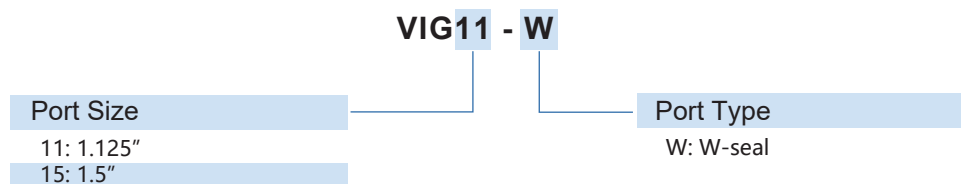
- W-seal
- Sealing faces independent from components receiving external forces
- Surface finish: max. 5 µin. Ra
- Gasket material: 316L Secondary Remelt
- Supporting part material: SS304



Dimensions (mm)



Ordering Information



VIGOUR

We offer solutions regarding your ideas!

www.vigourco.com

—
Add: Floor 2, Building 26, Lane 5355, Beisong Road,
Songjiang District, Shanghai China.
Phone: (86) 021-6760 0902
E-mail: info@vigourco.com



Scan the QR code to get the
product electronic catalog!

Follow us for more VIGOUR news!

