

# VIGOUR

We offer solutions regarding your ideas!

---

ULTRA HIGH PURITY GAS SYSTEM

---

Gas  
Control  
Solutions



**VUPS**

VHPS

VIGS

VGDS

# VIGOUR

# PRECISE MANUFACTURING SERVING THE WORLD

## BRAND INTRODUCTION

VIGOUR leads in technological innovation, adhering to the core principles of "safety, ultra-cleanliness, and pinpoint precision." Our mission is to provide gas control systems that are safe, stable, reliable, and customized to meet the needs of industrial manufacturing processes. By ensuring these systems operate securely and continuously, we drive industry progress and enable smooth industrial upgrades.



**SAFETY**



**STEADINESS**



**RELIABILITY**

# MANUFACTURING WORLD



## ABOUT VIGOUR



VIGOUR is an internationally leading provider of gas control system solutions. With operations in three major offices and production centers worldwide, we integrate production, sales, and R&D. Vigour specialize in creating equipment for gas pressure control, gas supply systems, monitoring systems, and instrumentation for industries like:

- Semiconductors: Providing complete gas control system solutions for processes like etching, diffusion, ion implantation, and thin-film deposition.
- Photovoltaics
- Hydrogen Energy
- Laboratory Applications

VIGOUR's been recognized as a "specialized, sophisticated, distinctive, and innovative" enterprise and a high-tech enterprise globally. We are certified under EU CE (PED ISO 2503), ISO 9001, ISO14001, ISO45001, RoHS, and CGA, with our own invention patents.



**VSR-50UB Series**

Single stage pressure regulator	
Surface finish:	10/25 µin. Ra
Inlet pressure:	150 psig
Outlet pressure:	Vac to /10/30/60/100 psig
Cv:	0.06 / 0.1
Material:	316L



**VSR-100UB Series**

Single stage pressure regulator	
Surface finish:	10/25 µin. Ra
Inlet pressure:	300/3500 psig
Outlet pressure:	Vac to /10/30/60/100/150 psig
Cv:	0.09 / 0.15
Material:	316L



**VSR-1000UB Series**

Single stage pressure regulator	
Surface finish:	10/25 µin. Ra
Inlet pressure:	300/3500 psig
Outlet pressure:	Vac to /10/30/60/100/150 psig
Cv:	0.09 / 0.15
Material:	316L



**VSR-210UB Series**

Single stage pressure regulator	
Surface finish:	10/25 µin. Ra
Inlet pressure:	300/1700/3000 psig
Outlet pressure:	Vac to /30/60/100/150/250 psig
Cv:	0.65 / 1.1
Material:	316L



**VSR-410UB Series**

Single stage pressure regulator	
Surface finish:	10/25 µin. Ra
Inlet pressure:	300/2300/3000 psig
Outlet pressure:	Vac to /30/60/100/150 psig
Cv:	0.45
Material:	316L



**VSR-510UB Series**

Single stage pressure regulator	
Surface finish:	10/25 µin. Ra
Inlet pressure:	300/3500 psig
Outlet pressure:	Vac to /30/60/100/150 psig
Cv:	0.09 / 0.15
Material:	316L



**VSR-610UB Series**

Single stage pressure regulator	
Surface finish:	10/25 µin. Ra
Inlet pressure:	300/3500 psig
Outlet pressure:	Vac to /10/30/60/100 psig
Cv:	0.13
Material:	316L



**VSR-710UB Series**

Dual stage pressure regulator	
Surface finish:	10/25 µin. Ra
Inlet pressure:	3500 psig
Outlet pressure:	Vac to /30/60/100 psig
Cv:	0.05 / 0.07
Material:	316L



**VSR-910UB Series**

Single stage pressure regulator	
Surface finish:	10/15 µin. Ra
Inlet pressure:	800/1700/3000 psig
Outlet pressure:	Vac to /30/60/100/150 psig
Cv:	3.0 / 4.0
Material:	316L



**VSR-911UB Series**

Single stage pressure regulator	
Surface finish:	10/15 µin. Ra
Inlet pressure:	800/1700/3000 psig
Outlet pressure:	300 psig
Cv:	3.0 / 4.0
Material:	316L



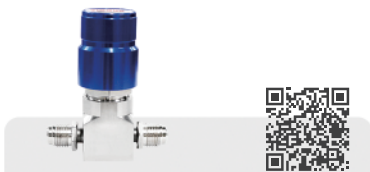
**VSR-920UB Series**

Single stage pressure regulator	
Surface finish:	10 µin. Ra
Inlet pressure:	300 psig
Outlet pressure:	Vac to /30/60/100/150 psig
Cv:	1.6
Material:	316L



**VSR-930UB Series**

Single stage pressure regulator	
Surface finish:	10 µin. Ra
Inlet pressure:	5800 psig
Outlet pressure:	25-500 / 100-2500 psig
Cv:	0.09 / 0.15
Material:	316L



**VSR-50UC Series**

Single stage pressure regulator

Surface finish: 5/7/10 µin. Ra

Inlet pressure: 150 psig

Outlet pressure: Vac to /10/30/60/100 psig

Cv: 0.06 / 0.1

Material: 316L secondary remelt



**VSR-100UC Series**

Single stage pressure regulator

Surface finish: 5/7/10 µin. Ra

Inlet pressure: 300/3500 psig

Outlet pressure: Vac to /10/30/60/100/150 psig

Cv: 0.09 / 0.15

Material: 316L secondary remelt



**VSR-1000UC Series**

Single stage pressure regulator

Surface finish: 5/7/10 µin. Ra

Inlet pressure: 300/3500 psig

Outlet pressure: Vac to /10/30/60/100/150 psig

Cv: 0.09 / 0.15

Material: 316L secondary remelt



**VSR-210UC Series**

Single stage pressure regulator

Surface finish: 5/7/10 µin. Ra

Inlet pressure: 300/1700/3000 psig

Outlet pressure: Vac to /30/60/100/150/250 psig

Cv: 0.65 / 1.1

Material: 316L secondary remelt



**VSR-410UC Series**

Single stage pressure regulator

Surface finish: 5/7/10 µin. Ra

Inlet pressure: 300/2300/3000 psig

Outlet pressure: Vac to /30/60/100/150 psig

Cv: 0.45

Material: 316L secondary remelt



**VSR-510UC Series**

Single stage pressure regulator

Surface finish: 5/7/10 µin. Ra

Inlet pressure: 300/3500 psig

Outlet pressure: Vac to /30/60/100/150 psig

Cv: 0.09 / 0.15

Material: 316L secondary remelt



**VSR-610UC Series**

Single stage pressure regulator

Surface finish: 5/7/10 µin. Ra

Inlet pressure: 300/3500 psig

Outlet pressure: Vac to /10/30/60/100 psig

Cv: 0.13

Material: 316L secondary remelt



**VSR-710UC Series**

Dual stage pressure regulator

Surface finish: 5/7/10 µin. Ra

Inlet pressure: 3500 psig

Outlet pressure: Vac to /30/60/100 psig

Cv: 0.05 / 0.07

Material: 316L secondary remelt



**VSR-920UC Series**

Single stage pressure regulator

Surface finish: 5/7/10 µin. Ra

Inlet pressure: 300 psig

Outlet pressure: Vac to /30/60/100/150 psig

Cv: 1.6

Material: 316L secondary remelt



**VDV32UB Series**

Diaphragm Valve

Pressure:	Max. 150 psig
Surface finish:	10 µin. Ra
Connection:	1/4" 3/8" 1/2" 3/4" VFS fitting / tube weld
Cv:	0.3 / 0.65
Material:	316L



**VDV33UB Series**

Diaphragm Valve

Pressure:	Max. 3000 psig
Surface finish:	10 µin. Ra
Connection:	1/4" 3/8" 1/2" VFS fitting / tube weld
Cv:	0.27 / 0.5
Material:	316L



**VDV40UB Series**

Diaphragm Valve

Pressure:	Max. 3000 psig
Surface finish:	10 µin. Ra
Connection:	1/4" 3/8" VFS fitting / tube weld
Cv:	manual=0.29 , pneumatic=0.23
Material:	316L



**VDV42UB Series**

Diaphragm Valve (The valve seat can be replaced)

Pressure:	Max. 300 psig
Surface finish:	10 µin. Ra
Connection:	1/4" 3/8" 1/2" VFS fitting / tube weld
Cv:	0.3 / 0.65
Material:	316L



**VDV52UB Series**

Diaphragm Valve

Pressure:	Max. 300 psig
Surface finish:	10 µin. Ra
Connection:	1/4" 3/8" 1/2" VFS fitting / tube weld
Cv:	0.3 / 0.65
Material:	316L



**VDV22UB Series**

Diaphragm Valve

Pressure:	Max. 150 psig
Surface finish:	10 µin. Ra
Connection:	1/4" 1/2" VFS fitting
Cv:	0.3 / 0.65
Material:	316L



**VDV36UB Series**

Low-pressure Diaphragm Valve Manifold

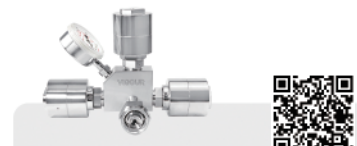
Pressure:	Max. 150 psig
Surface finish:	10 µin. Ra
Connection:	1/4" VFS fitting / tube weld
Cv:	0.3
Material:	316L



**VDV46UB Series**

High-pressure Diaphragm Valve Manifold

Pressure:	Max. 3000 psig
Surface finish:	10 µin. Ra
Connection:	1/4" VFS fitting / tube weld
Cv:	0.1
Material:	316L



**VDV48UB Series**

Ultra High Purity Purging Block

Pressure:	Max. 3000 psig
Surface finish:	10 µin. Ra
Connection:	1/4" VFS fitting / tube weld
Cv:	0.1
Material:	316L



**VDV37UB Series**

Diaphragm Valve

Pressure:	Manual Max. 300 / Pneumatic Max. 250 psig
Surface finish:	10 µin. Ra
Connection:	3/4" 1/2" 3/8" VFS fitting / tube weld
Cv:	2.8
Material:	316L



**VDV38UB Series**

Diaphragm Valve

Pressure:	Max. 1300 / 3000 psig
Surface finish:	10 µin. Ra
Connection:	1/4" 1/2" 3/4" 3/8" VFS fitting / tube weld
Cv:	manual=1.0, pneumatic=1.0 / 0.7
Material:	316L



**VDV39UB Series**

Diaphragm Valve

Pressure:	Max. 300 psig
Surface finish:	10 µin. Ra
Connection:	3/4" 1/2" VFS fitting / tube weld
Cv:	2.8
Material:	316L

**VDV32UC Series**

Diaphragm Valve

Pressure: Max. 150 psig

Surface finish: 7 µin. Ra

Connection: 1/4" 3/8" 1/2" 3/4" VFS fitting / tube weld

Cv: 0.3 / 0.65

Material: 316L secondary remelt

**VDV33UC Series**

Diaphragm Valve

Pressure: Max. 3000 psig

Surface finish: 7 µin. Ra

Connection: 1/4" 3/8" 1/2" VFS fitting / tube weld

Cv: 0.27 / 0.5

Material: 316L secondary remelt

**VDV40UC Series**

Diaphragm Valve

Pressure: Max. 3000 psig

Surface finish: 7 µin. Ra

Connection: 1/4" 3/8" VFS fitting / tube weld

Cv: manual=0.29, pneumatic=0.23

Material: 316L secondary remelt

**VDV42UC Series**

Diaphragm Valve

Pressure: Max. 300 psig

Surface finish: 7 µin. Ra

Connection: 1/4" 3/8" 1/2" VFS fitting / tube weld

Cv: 0.3 / 0.65

Material: 316L secondary remelt

**VDV52UC Series**

Diaphragm Valve

Pressure: Max. 300 psig

Surface finish: 7 µin. Ra

Connection: 1/4" 3/8" 1/2" VFS fitting / tube weld

Cv: 0.3 / 0.65

Material: 316L secondary remelt

**VDV36UC Series**

Low-pressure Diaphragm Valve Manifold

Pressure: Max. 150 psig

Surface finish: 7 µin. Ra

Connection: 1/4" VFS fitting / tube weld

Cv: 0.3

Material: 316L secondary remelt

**VDV46UC Series**

High-pressure Diaphragm Valve Manifold

Pressure: Max. 3000 psig

Surface finish: 7 µin. Ra

Connection: 1/4" VFS fitting / tube weld

Cv: 0.1

Material: 316L secondary remelt

**VDV48UC Series**

Ultra High Purity Purging Block

Pressure: Max. 3000 psig

Surface finish: 7 µin. Ra

Connection: 1/4" VFS fitting / tube weld

Cv: 0.1

Material: 316L secondary remelt

**VDV37UC Series**

Diaphragm Valve

Pressure: Manual Max. 300 / Pneumatic Max. 250 psig

Surface finish: 7 µin. Ra

Connection: 3/4" 1/2" 3/8" VFS fitting

Cv: 2.8

Material: 316L secondary remelt

**VDV38UC Series**

Diaphragm Valve

Pressure: Max. 1300 / 3000 psig

Surface finish: 7 µin. Ra

Connection: 1/4" 1/2" 3/4" 3/8" VFS fitting / tube weld

Cv: manual=1.0, pneumatic=1.0 / 0.7

Material: 316L secondary remelt



**VUBV Series**

Bellows Valve

Manual pressure:	Vacuum to 500 psig
Pneumatic pressure:	Vacuum to 125 psig
Connection:	1/4" VFS / Tube fitting / Tube weld
Cv:	0.3
Material:	316L



**VUBV2 Series**

Bellows Valve

Manual pressure:	Vacuum to 375 psig
Pneumatic pressure:	Vacuum to 250 psig
Connection:	3/4" 1" 1.5" 2" VFS fitting / Tube weld
Cv:	14.5 / 21 / 46 / 52
Material:	316L



**VALD Series**

Atomic Layer Deposition Valve

Pressure:	Max. 145 psig
Connection:	1/4" 1/2" VFS fitting / tube weld
Optional:	Solenoid pilot valve Electronic actuator-position sensor
Cv:	0.27 / 0.62
Material:	316L / 316L secondary remelt



**VBMV Series**

Metering Bellows Valve

Pressure:	Max. 700 psig
Connection:	1/4" 6mm Tube fitting 1/4" VFS male, 3/8" Tube weld
Cv:	0.019 / 0.3
Material:	316



**VMV Series**

Metering Valve

Pressure:	Max. 2000 psig
Connection:	1/16" 1/4" 1/8" 6mm 3mm tube fitting 1/4" 1/8" NPT, 1/4" VFS fitting
Cv:	0.004 / 0.03 / 0.16
Material:	316



**VUP Series**

Gas Stick

Series:	100TG / 200TG / 300TG
Inlet pressure:	Max. 300 psig
Outlet pressure:	Vac to /10/30/60/100/150 psig
Connection:	1/4" 1/2" VFS fitting
Material:	316L



**VUP-1U Series**

Pressure Control Panel

Type:	Single side type
Inlet pressure:	300 / 3500 psig
Outlet pressure:	Vac to 10/30/60/100/150 psig
Cv:	0.09 / 0.15



**VUP-2U Series**

Pressure Control Panel

Type:	Two-sided type
Inlet pressure:	300 / 3500 psig
Outlet pressure:	Vac to 10/30/60/100/150 psig
Cv:	0.09 / 0.15



**VUP-3U Series**

Pressure Control Panel

Type:	Automatic change-over
Inlet pressure:	300 / 3500 psig
Outlet pressure:	Vac to 10/30/60/100/150 psig
Cv:	0.09 / 0.15



**VUP-4U Series**

Pressure Control Panel

Type:	Single side type
Inlet pressure:	300 / 1700 / 3000 psig
Outlet pressure:	Vac to 30/60/100/150 psig
Cv:	0.65 / 1.1 (HF optional)



**VUP-5U Series**

Pressure Control Panel

Type:	Two-sided type
Inlet pressure:	300 / 1700 / 3000 psig
Outlet pressure:	Vac to 30/60/100/150 psig
Cv:	0.65 / 1.1 (HF optional)



**VUP-6U Series**

Pressure Control Panel

Type:	Automatic change-over
Inlet pressure:	300 / 1700 / 3000 psig
Outlet pressure:	Vac to /30/60/100/150 psig
Cv:	0.65 / 1.1 (HF optional)



**VVG Series**

Vacuum Generator
Maximum vacuum: -90 kPa
Vacuum port pressure: Max. 70psig
Outlet connection: 1/2" VFS fitting
Vacuum connection: 1/4" VFS fitting
Material: 316L



**VVG1 Series**

Vacuum Generator
Maximum vacuum: -88 kPa
Vacuum port pressure: Max. 3500 psig
Outlet connection: 1/2" VFS fitting, 3/8" Tube weld
Vacuum connection: 1/4" VFS fitting / Tube weld
Material: 316L



**VVG2 Series**

Vacuum Generator
Maximum vacuum: -88 kPa
Vacuum port pressure: Max. 3000 psig
Outlet connection: 1/2" VFS fitting, 3/8" Tube weld
Vacuum connection: 1/4" VFS fitting / Tube weld
Material: 316L



**VCVH Series**

Check Valve
Working pressure: Max. 4500 psig
Opening pressure: 1/3 psig, 1psig
Connection: 1/4" 1/2" 3/4" VFS fitting
Cv: 0.67 / 1.8 / 4.7
Body material: 316L



**VUCV Series**

All-Welded Check Valve
Working pressure: Max. 3000 psig
Opening pressure: <2 psig
Connection: 1/4" 1/2" VFS fitting
Cv: 0.55 / 0.7
Body material: 316L / Hastelloy® C276



**VCA Series**

Adjustable Check Valve
Working pressure: Max. 3000 psig
Opening pressure: 3~350psig
Connection: 1/4" 6mm 8mm Tube fitting, 1/4" VFS male / NPT male
Body material: 316L



**VFH Series**

Filter
Filtration accuracy: 0.5/2/5/10/20/40/70 µm
Connection: 1/4" 1/2" VFS fitting
Gasket material: 316L
Body material: 316L



**VUF Series**

Filter
Filtration accuracy: 0.003µm
Connection: 1/4" 1/2" VFS fitting
Filter material: PTFE
Shell material: 316L



**VUGF Series**

Gasket Filter
Filtration accuracy: 0.003µm
Gasket size: 1/4" 3/8" 1/2" VFS Gasket
Gasket material: 316L / Nickel
Body material: 316L



**VEFS1 Series**

Flow Switch
Pressure: vacuum to 3500 psig
Accuracy: ±10%
Installation: Vertical within 8° and inlet port at the bottom
Connection: 1/4" VFS fitting / Tube weld
Material: 316L secondary remelt



**VEFS2 Series**

Flow Switch
Pressure: vacuum to 2000 / 3000 / 3500 psig
Accuracy: ±20%
Installation: Horizontal / Vertical
Connection: 3/4" 1/2" VFS fitting / Tube weld
Material: 316L



**VRU / VGU Series**

Pressure Gauge
Type: Radial direction / Axial direction
Scale: bar / psig dual scale
Connection: 1/4" VFS fitting
Size: 2"
Accuracy: Grade A per ASME B40.1



**VRT / VGT Series**

Pressure Gauge

Type:	Radial direction / Axial direction
Scale:	bar / psig dual scale
Connection:	1/4" 6mm Tube fitting
Size:	2"
Accuracy:	Grade A per ASME B40.1



**VGU20SE / VRU20SE Series**

Contact Gauge

Type:	Radial direction / Axial direction
Scale:	bar / psig dual scale
Connection:	1/4" VFS fitting
Size:	2"
Accuracy:	±2.5%



**VCG20S / VRG20S Series**

Contact Gauge

Type:	Radial direction / Axial direction
Scale:	bar / psig dual scale
Connection:	1/4" VFS fitting
Size:	2"
Accuracy:	Grade A per ASME B40.1



**VUC Series**

Cylinder Connection

Connection:	6mm Tube fitting
	1/4" 6mm Tube weld
Surface finish:	10/15 µin. Ra
Material:	316L



**VUC DISS Series**

Cylinder Connection

Connection:	1/4" VFS fitting
	1/4" 1/2" Tube weld
Gasket material:	Nickle / PCTFE
Body material:	316L



**Connector Fitting Series**

VFS / Micro Weld / Tube Butt Weld / Weld Assemblies

Type:	Long Elbow / Reducing Long Elbow
	Long Tee / Reducing Long Tee
	Reducing Long Union
	Fitting Lock Device

# VIGOUR

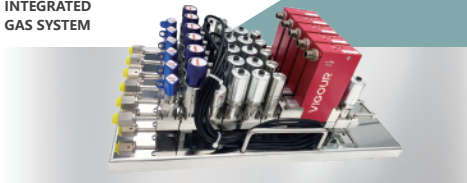
**VUPS**  
ULTRA HIGH PURITY  
GAS SYSTEM



**VHPS**  
HIGH PURITY  
GAS SYSTEM



**VIGS**  
INTEGRATED  
GAS SYSTEM



**VGDS**  
GAS DELIVERY  
SYSTEM



High-efficiency response



Accurate management and control



Customized service

# VIGOUR

We offer solutions regarding your ideas!

[www.vigourco.com](http://www.vigourco.com)

—  
Add: Floor 2, Building 26, Lane 5355, Beisong Road,  
Songjiang District, Shanghai China.  
Phone: (86) 021-6760 0902  
E-mail: [info@vigourco.com](mailto:info@vigourco.com)



▲  
Scan the QR code to get the  
product electronic catalog!

Follow us for more VIGOUR news!

