

Automatic Change Over System

VSP-5A Series

VIGOUR

Product Features

- Semi-automatic change over system
- VSR-1E Series single-stage regulator
- Brass chrome plated body for inert, reactive, flammable and oxidizing gas and mixtures up to grade 6.0
- Stainless steel 316L body and bonnet for corrosive gases
- Modular design
- Diaphragm type shut-off valves
- Suitable for inlet pressure up to 300 bar
- Compact design for easy installation into safety cabinets
- Tested for use with oxygen



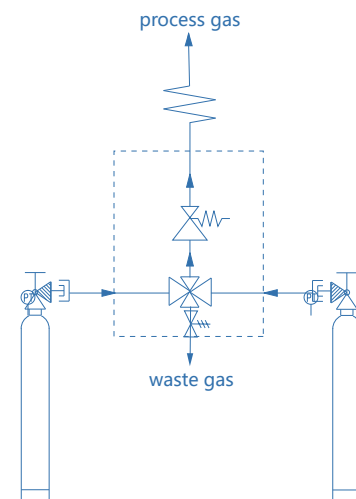
Typical Applications

- Component Testing
- Calibration Systems
- Laboratory Pressure Control
- High Pressure Sampling Systems
- Service & Test Equipment

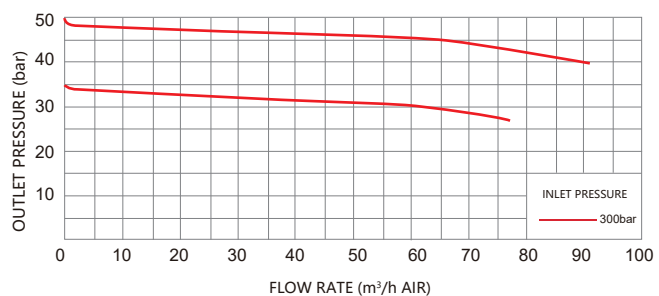
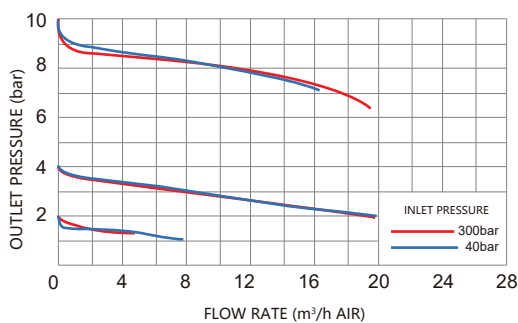
Technical Data

Type:	Double stage
Inlet pressure P1:	max. 300 bar
Outlet pressure P2:	2/4/10/20/35/50 bar
Materials	
Body regulator:	see ordering info
Valve seat:	PCTFE
Diaphragm:	Hastelloy® C276
Filter:	SS 316L
Temperature range:	-30°C to +74°C
Leak rate (to atmosphere):	1x10 ⁻⁸ mbar l/s He
	(via seat): 1x10 ⁻⁶ mbar l/s He
Weight:	12.1kg

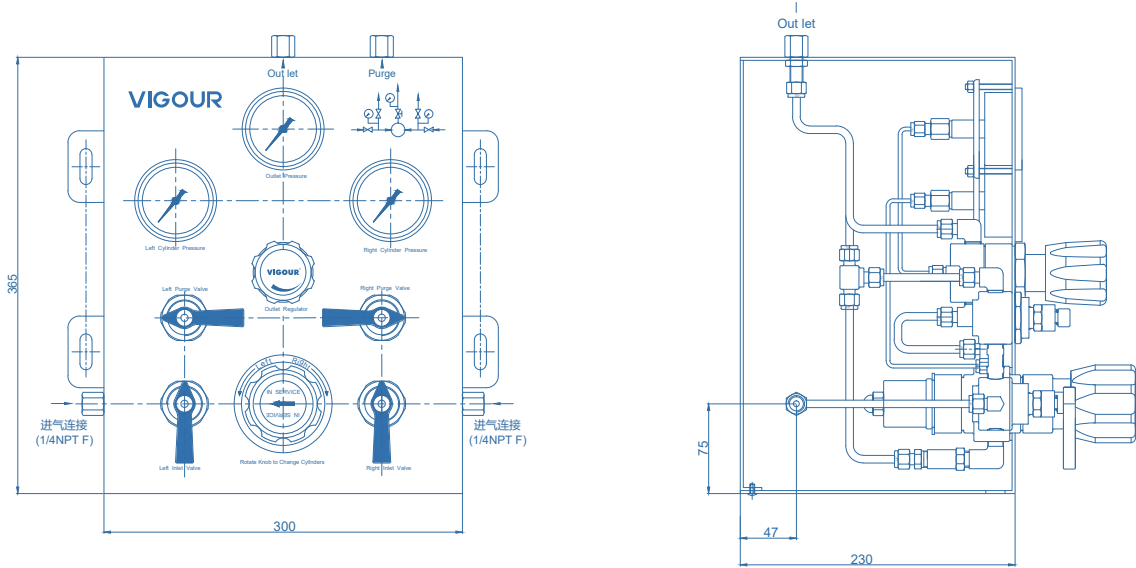
Schematic Drawing



Flow Chart



Dimensions (mm)



Ordering Information

VSP - 5AS - 200 - 10 - F4 - F4 - V - N₂

Body Material

- S: 316L
- C: Chrome Plated Brass

Inlet Pressure P₁

- 40: 40 bar
- 100: 100 bar
- 200: 200 bar
- 300: 300 bar

Outlet Pressure P₂

- 2: to 2 bar
- 4: to 4 bar
- 10: to 10 bar
- 20: to 20 bar
- 35: to 35 bar (Non Relief valve)
- 50: to 50 bar (Non Relief valve)

Type Of Gas

Please specify type of gas

Option

- None: Includes inlet valve and vent valve
- V: Including inlet valve, not including vent valve
- X: Non inlet valve and vent valve

Outlet Connection

F4: 1/4"NPT(F)

Inlet Connection

- F4: 1/4"NPT(F) (standard)
- M4: 1/4"NPT(M)

