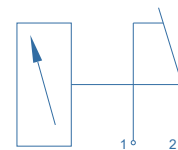


Product Features

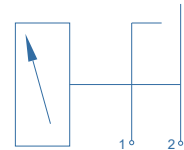
- Contact pressure gauges with digital signal
- Set point adjustable over 10-90% of scale
- Double scale bar / psig
- c/w 2 meters of cable
- Tested for use with oxygen

Technical Data

Body Material:	316L
Working Voltage:	180 / 130 VDC
Max. Voltage:	200 VDC
Max. ON / OFF amperage:	0.5A
Contact power:	10W
Contact Current (initial):	150 mΩ
Contact Capacitance:	0.2 pF
Insulation resistance:	10 ¹⁰ Ω
Frequency:	5.2 kHz
Working Temperature:	-40°C~ 125°C
Nominal diameter:	63mm
Connection:	1/4"NPT
Length of cable:	2 meters
Scale:	bar / psig
Window:	Laminated safety glass
Switching accuracy:	+/- 2.5% of full scale
Weight:	0.375 kg

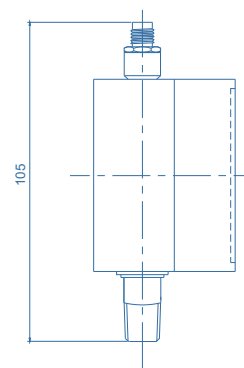
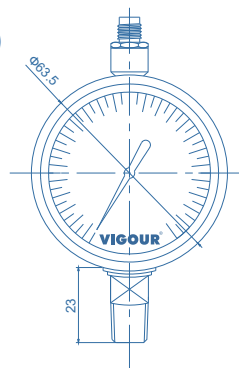


Normally Closed (standard)



Normally Open (option)

Dimensions (mm)



Ordering Information

VG25E - 400 - NO

Pressure Range

25: 0~25bar / 0~350psig
 60: 0~60bar / 0~860psig
 250: 0~250bar / 0~3500psig
 400: 0~400bar / 0~5800psig

Status

None: Normally Closed
 NO: Normally Open

